

## WHY ELECTRIC CARS ARE A BETTER RIDE

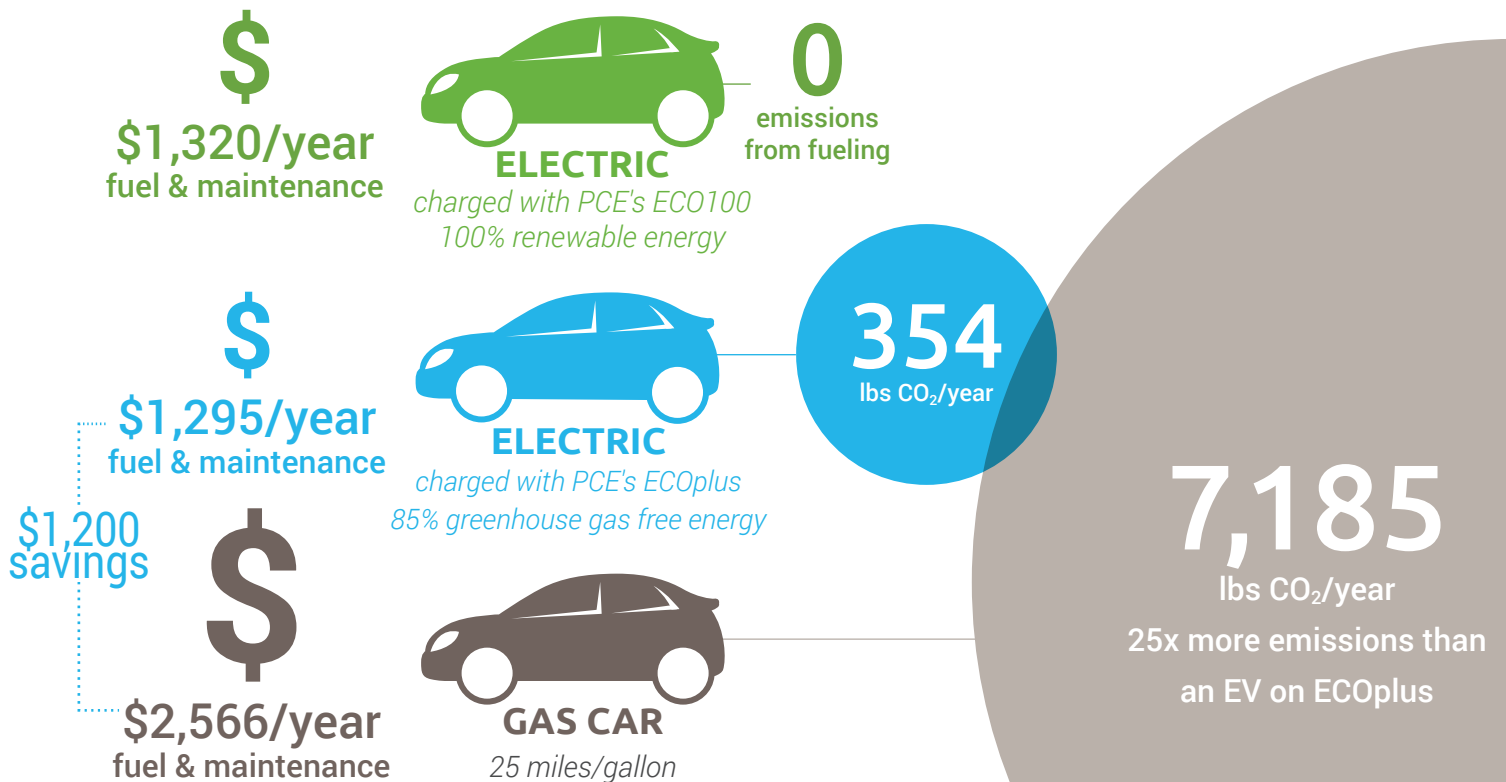
### Experience the Benefits

- Lower costs
- Fast & smooth acceleration
- Quiet drive
- Minimal maintenance
- Better for the environment

Save money and help the environment by powering your car with electricity instead of gas. With Peninsula Clean Energy's cleaner energy at lower rates, San Mateo County residents save even more. Stay tuned for programs that make electric cars even more affordable and convenient!

[www.peninsulacleanenergy.com/ev](http://www.peninsulacleanenergy.com/ev)

### Electric Vehicles (EVs) Compared to Gas



For data sources see [www.peninsulacleanenergy.com/ev](http://www.peninsulacleanenergy.com/ev)

*"I love driving my electric car. The ride is smooth and quiet, and it's way less expensive to use electricity rather than gasoline." - Jan Pepper, CEO Peninsula Clean Energy*

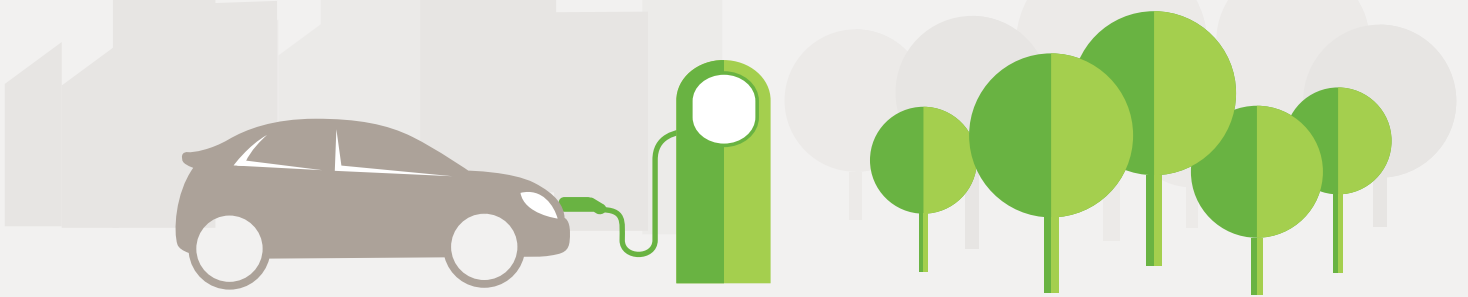
## What Type of Electric Car is Best for You?

### Fully Electric Vehicle (EV)

- Electric motor only
- Greenest option: no more gas!
- Lowest fueling costs
- Simple, low-cost maintenance: no oil changes needed
- Range up to 315 miles on new models
- Federal and state incentives of up to \$10,000 to reduce price
- Currently eligible for carpool stickers

### Plug-In Electric Vehicle (PEV)

- Both electric and gas motors
- Usually use electric range first, then switch to gas-electric hybrid
- All electric range up to 53 miles, plus many more miles on a tank of gas
- Maintain both gas and electric engines
- Lower federal and state incentives
- Currently eligible for carpool stickers



## How Much Range Do You Need? Questions to Think About

- **How much do you drive in an average day?**  
The average commute in San Mateo County is about 44 miles round trip, easily in the range of fully electric cars.
- **Does your household already have another car?**  
Fully electric cars make great second commuter cars if more than one person in your household needs to drive.

Considering a fully electric car as your only vehicle, but wondering about road trips? Rent exactly the right vehicle for the occasion. Skiing? Rent a four-wheel drive. Camping? Rent a camper van. Meanwhile, save on your every day drive!

## Charging is Easier Than You Think



### Level 1: Easy

**Plug in at home to a normal outlet.** You don't need special equipment to charge your car at home. Electric cars come with a cord that works in any normal grounded 110-volt household outlet with safe wiring. **An average EV can add about 60 miles of battery range overnight.**



### Level 2: Faster

**Plug in to 240-volt chargers.** For faster charging, many owners install Level 2 chargers at home or use charging stations at work or other convenient locations. **An average EV can add about 100 miles of battery range in about 4 hours.**



### Level 3: Fastest

**DC fast charge while running errands.** A special plug lets some EVs charge super fast with direct current. Public Level 3 chargers are located at grocery stores and shopping malls throughout San Mateo County. **An average EV can add over 100 miles in 40 minutes.**