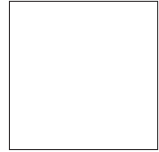
 PENINSULA
CLEAN ENERGY
2075 Woodside Rd,
Redwood City CA 94061



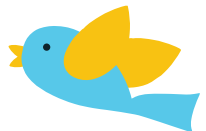
*SAVE \$ THOUSANDS
ON AN ELECTRIC CAR*



**Peninsula Clean Energy discounts on new electric cars
for San Mateo County residents coming October 1.**

See peninsulacleanenergy.com/ev for details

What's in your electricity?
Flip over for your annual Power Content Label.



YOUR ENERGY CHOICES



In San Mateo County, you automatically benefit from cleaner energy at 5% lower rates compared to PG&E.



Or choose 100% renewable energy for just one cent per kWh more.



ECO100 is Green-e Energy certified, and meets the environmental and consumer-protection standards set forth by the nonprofit Center for Resource Solutions. Learn more at green-e.org.

CONTACT US

1-866-966-0110 or peninsulacleanenergy.com

| 2017 POWER CONTENT LABEL | | | |
|---|-------------|---|---------------------|
| Peninsula Clean Energy | | | |
| ENERGY RESOURCES | ECOplus | ECO100 | 2017 CA Power Mix** |
| Eligible Renewable | 53% | 100% | 29% |
| Biomass & biowaste | 7% | 0% | 2% |
| Geothermal | 6% | 0% | 4% |
| Eligible hydroelectric | 9% | 0% | 3% |
| Solar | 7% | 50% | 10% |
| Wind | 24% | 50% | 10% |
| Coal | 0% | 0% | 4% |
| Large Hydroelectric | 33% | 0% | 15% |
| Natural Gas | 0% | 0% | 34% |
| Nuclear | 0% | 0% | 9% |
| Other | 0% | 0% | <1% |
| Unspecified sources of power* | 15% | 0% | 9% |
| TOTAL | 100% | 100% | 100% |
| * "Unspecified sources of power" means electricity from transactions that are not traceable to specific generation sources. | | | |
| ** Percentages are estimated annually by the California Energy Commission based on the electricity sold to California consumers during the identified year. | | | |
| For specific information about this electricity product, contact: | | Peninsula Clean Energy 1-866-966-0110 | |
| For general information about the Power Content Label, please visit: | | http://www.energy.ca.gov/pcl/ | |
| For additional questions, please contact the California Energy Commission at: | | 844-454-2906 | |

This information is required by the California Energy Commission to be mailed to any customer that took service from Peninsula Clean Energy in 2017 and active Peninsula Clean Energy customers. The generation data represents 2017 and is provided in the "Annual Report to the California Energy Commission: Power Source Disclosure Program." Percentages may not total 100% due to rounding.