

SAVE THOUSANDS WITH AN ELECTRIC CAR

Experience the Benefits:

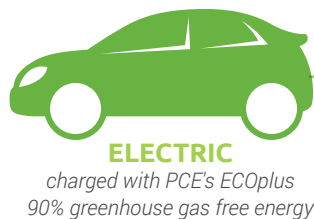
- Lower costs
- Fast & smooth acceleration
- Quiet drive
- Minimal maintenance
- Better for the environment

Save money and help the environment by powering your car with electricity instead of gas. With Peninsula Clean Energy's cleaner energy at lower rates, San Mateo County residents save even more. Stay tuned for programs that make electric cars even more affordable and convenient!

www.peninsulacleanenergy.com/ev

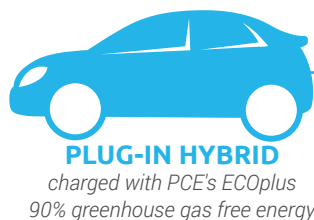
Electric Vehicles (EVs) Compared to Gas


\$1,320/year
fuel & maintenance



Emissions:
354
lbs CO₂/year


\$1,644/year
fuel & maintenance



Emissions:
1,728
lbs CO₂/year


\$2,509/year
fuel & maintenance



Emissions:
7,185
lbs CO₂/year
20x that of an
EV on ECOplus

For data sources see www.peninsulacleanenergy.com/ev

"I love driving my electric car. The ride is smooth and quiet, and it's way less expensive to use electricity rather than gasoline." - Jan Pepper, CEO Peninsula Clean Energy

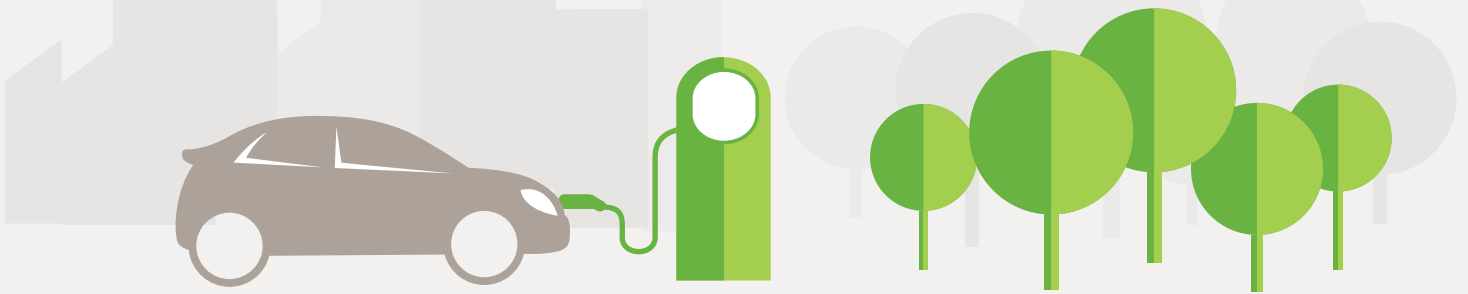
What Type of Electric Car is Best for You?

Fully Electric Vehicle

- Electric motor only
- Greenest option: no more gas!
- Lowest fueling costs
- Simple, low-cost maintenance: no oil changes or smog checks
- Range up to 315 miles on new models
- Federal and state incentives of up to \$10,000 to reduce price
- Currently eligible for carpool stickers

Plug-In Hybrid Electric Vehicle (PEV)

- Both electric motor and gas engine
- Usually use electric range first, then switch to gas-electric hybrid
- All electric range up to 53 miles, plus many more miles on a tank of gas
- Maintain both engine and motor
- Typically lower federal and state incentives
- Currently eligible for carpool stickers



How Much Range Do You Need? Questions to Think About

- **How much do you drive in an average day?**
The average commute in San Mateo County is about 44 miles round trip, easily in the range of fully electric cars.
- **Does your household already have another car?**
Fully electric cars make great second commuter cars if more than one person in your household needs to drive.

Considering a fully electric car as your only vehicle, but wondering about road trips? Rent exactly the right vehicle for the occasion. Skiing? Rent a four-wheel drive. Camping? Rent a camper van. Meanwhile, save on your every day drive!

Charging is Easier Than You Think



Level 1: Easy

Plug in at home to a normal outlet. You don't need special equipment to charge your car at home. Electric cars come with a cord that works in normal 120-volt household outlets on a dedicated circuit. **An average EV can add about 30 miles of battery range overnight.**



Level 2: Faster

Plug in to 240-volt chargers. For faster charging, many owners install Level 2 chargers at home or use charging stations at work or other convenient locations. **An average EV can add about 100 miles of battery range in about 4 hours.**



Level 3: Fastest

DC fast charge while running errands. A special plug lets some EVs charge super fast with direct current. Public Level 3 chargers are located at grocery stores and shopping malls throughout San Mateo County. **An average EV can add over 100 miles in 40 minutes.**