



Peninsula Clean Energy Board of Directors Meeting

June 27, 2019

Agenda

- Call to order / Roll call
- Public Comment
- Action to set the agenda and approve consent items

Regular Agenda

1. Chair Report (Discussion)

Regular Agenda

2. CEO Report (Discussion)

Introducing ...

PCE's new powerpoint template

Hope you like it!

Staffing Update



Welcome to Peter Levitt!

- Associate Distributed Energy Resources Strategy Manager

Positions filled:

- Senior Financial Analyst

Other open positions :

- Building Electrification Programs Manager
- Business Relationship Manager

Reach Codes Update

- All cities will be adopting new building codes this year
- Opportunity to adopt stronger codes for new building electrification and EV infrastructure through REACH CODES
- PCE working with SVCE and SJCE to promote this throughout the region

Encourage your city to sign the LOI for \$10,000 funding to support your consideration of the Reach codes

Reach Codes Update

PCE Member Agency	Status
Atherton	
Belmont	
Brisbane	LOI Received
Burlingame	LOI Received
Colma	(actively engaged)
Daly City	
East Palo Alto	
Foster City	
Half Moon Bay	
Hillsborough	(actively engaged)
Menlo Park	
Millbrae	LOI Received
Pacifica	(actively engaged)
Portola Valley	LOI Received
Redwood City	LOI Received
San Bruno	
San Carlos	
San Mateo (City)	LOI Received
South San Francisco	
Woodside	(actively engaged)
Unincorporated San Mateo County	LOI Received

SVCE Member Agency	Status
Campbell	LOI Received
Cupertino	LOI Received
Gilroy	LOI Received
Los Altos	LOI Received
Los Altos Hills	LOI Received
Los Gatos	
Milpitas	LOI Received
Monte Sereno	(expressed interest)
Morgan Hill	LOI Received
Mountain View	LOI Received
Saratoga	
Sunnyvale	LOI Received
Uninc. Santa Clara County	(expressed interest)

Wright Solar Construction Update

Board Member Rick Bonilla, Board Member Emeritus John Keener, and PCE Staff members Siobhan Doherty, Chelsea Keys, and Charlsie Chang visited the Wright Solar installation yesterday, June 26

Wright Solar Construction Update



Wright Solar Construction Update



Legislative Update

Letters of Support submitted:

- ❖ AB 1424 (Berman) – not require credit card readers in existing or new EV chargers
- ❖ AB 684 (Levine) – research, develop and propose mandatory building standards for EV chargers in MUD and non-residential buildings
- ❖ SB 255 (Bradford) – improve opportunities for women, minorities, disabled veterans, and LBGTQ businesses to receive contracts from water and energy providers
- ❖ SB 49 (Skinner) – facilitate load management through standards for buildings and appliances

Letters of Opposition submitted:

- ❖ SB 155 (Bradford) – converts IRPs from planning documents into procurements mandates
- ❖ AB 56 (Garcia) – gives CPUC procurement authority over CCAs and requires unfair cost shifts

Handout - Board Member Expertise

Developing PCE Annual Report highlighting PCE activities

Including page on the PCE board:

- Add the one-term that best describes the expertise you bring to the PCE board

City specific meetings

Check-in's – at least annually, with each city/town/county to:

- Meet with each city's appointed members to PCE's Board, and their City Manager if possible
- Gain perspective on city needs / priorities
- Share ideas and focus for the future

Before you leave tonight - Open your calendars and see Anne.
Are you available on...

July 15 or 29 (morning coffee),
July 23, 25, or 29 for lunch,
July 26 for anything any time?

Executive Committee

Please note:

Meetings **cancelled** for July 8 and August 12

Regular Agenda

3. Citizens Advisory Committee Report (Discussion)

Regular Agenda

4. Appointment of Two New Members to the Citizens Advisory Committee (CAC) (Action)

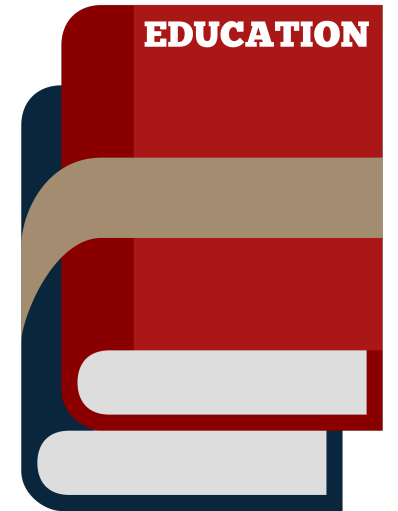
Regular Agenda

5. Update on PCE's Schools and Youth Engagement Projects (Discussion)

Peninsula Clean Energy & Schools

Goals

- ❖ Increase understanding of electricity content, usage, conservation and GHG emission reduction
- ❖ Equip students (and their parents) with an understanding of their electric bill and PCE as a part of it
- ❖ Increase understanding of PCE and its benefits



Schools Projects Overview

- ❖ Schools and Youth Networking and Outreach
- ❖ One Planet Schools Challenge
- ❖ STEM Fair
- ❖ Kids & Schools Webpage
- ❖ **Dashboard Pilot**
- ❖ **Clean Energy Teacher Fellowship**
- ❖ **Schools Activity Packet**

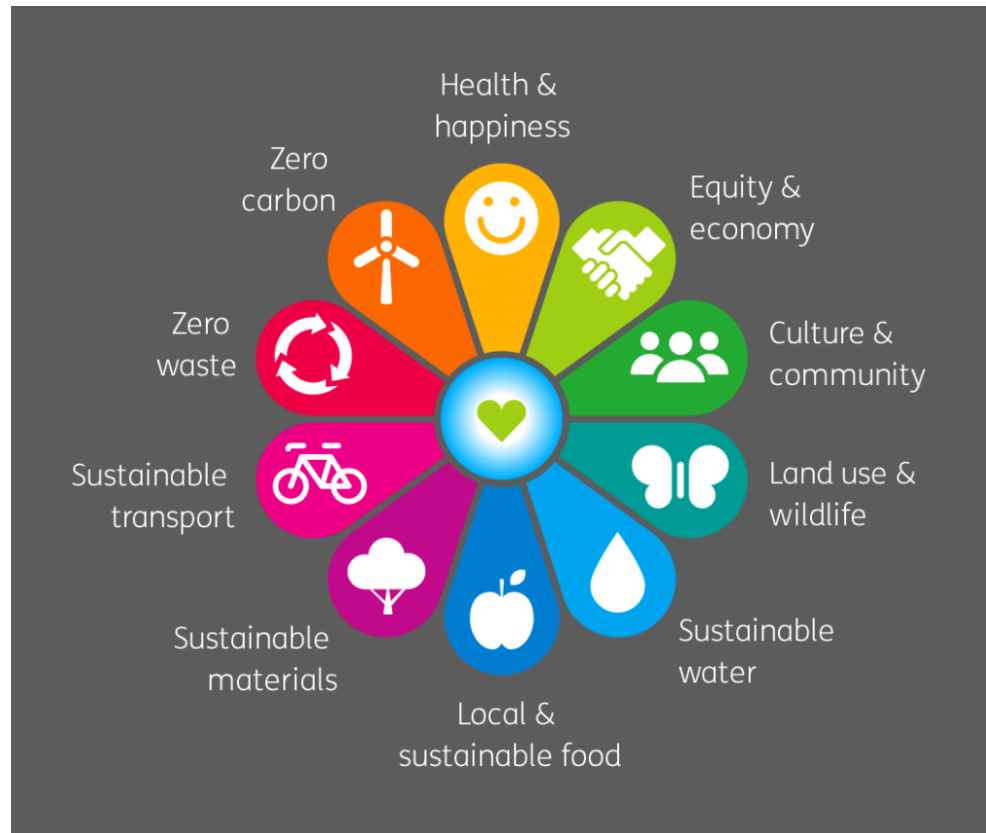
Classroom & Youth Group Presentations

- ❖ Joined San Mateo County Office of Education (SMCOE) Environmental Literacy Community of Practice
- ❖ Trained Cañada College students for PCE during Earth Month
- ❖ Presented to Woodside High School Green Academy classes
- ❖ Presented to youth groups like Cub Scouts



One Planet Schools Challenge

- ❖ Recognizes leaders who are driving environmental and social transformation across their school and greater community
- ❖ PCE sponsored the Zero Carbon award for \$1,000



San Mateo County STEM Fair

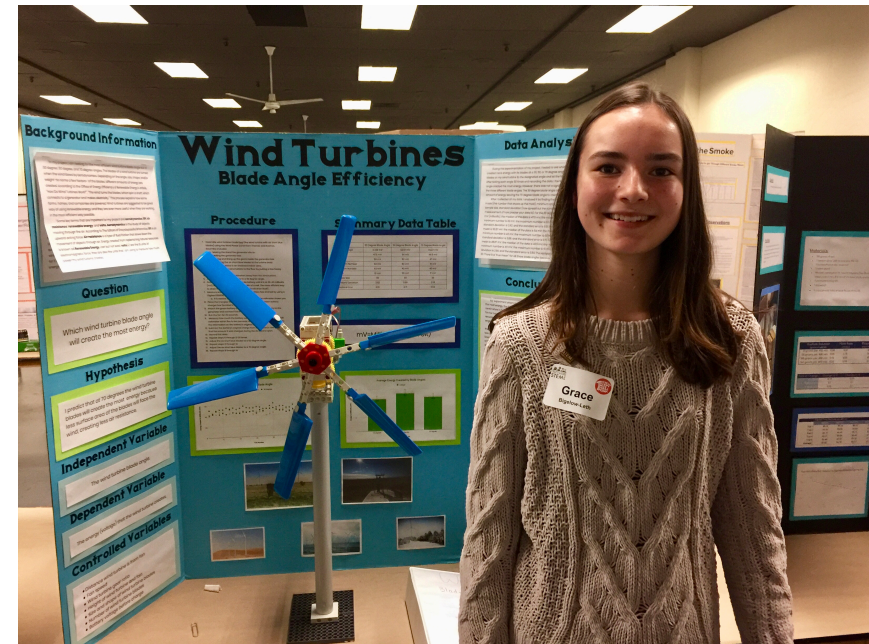
- ❖ Hosted clean energy booth reaching 470 parents/students
- ❖ Awarded 3 Special Awards
- ❖ Received press coverage in 2018 from The Almanac

PCE Special Award Recipients



2018: Georgia Hutchinson
Woodside, 7th Grade

2018: Charlotte Sullivan
Belmont, 7th Grade



2019: Grace Bigelow-Luth
Half Moon Bay, 8th Grade

Kids & Schools Website Tab



[Residents & Businesses](#) [Go Electric Programs](#) [Our Power](#) [Meetings & Events](#) [News & Media](#) [About Us](#) [RFPs & Grants](#) [Kids & Schools](#)



[Resource References](#)

[Home](#) / [Resource References](#)

Schools and Youth – Educator Resources

Get started with your search for lessons with a climate and energy focus with these resources!

All about Energy:

- [National Energy Education Development Project \(NEED\)](#)
- [Switch Energy Film & Education Project](#)

Kids & Schools Website Tab

Created for teachers to find and utilize energy-related education and activities.

Includes:

- ❖ Climate Change Impacts & Factors
- ❖ Climate Action
- ❖ PCE Developed Teacher Resources
- ❖ Resource References



Webpages were created by our 2018 Ignited Teacher Fellow Andre Tan. Launched in August 2018.

Dashboard Pilot

- ❖ Goal: Educate teachers and students about energy use
- ❖ Online dashboard of school energy use in a student-friendly format that teachers can use in lesson plans
- ❖ Pilot in San Carlos School District in partnership with SMCOE
2019-2020
- ❖ PCE funded SMCOE for \$9,500 and
San Carlos School District for \$25,000



Dashboard Pilot



Energy at SMCOE



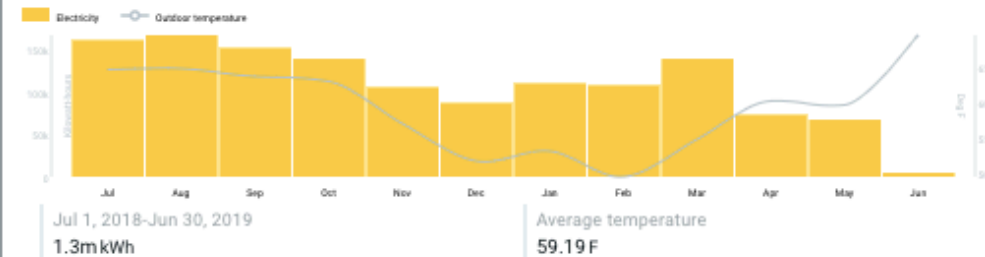
The San Mateo County Office of Education (SMCOE) is responsible for energy demand across five properties throughout San Mateo County. Each property has a different mix of electricity and natural gas. Utilize the data below to better understand the energy demand at each property, and associated costs and emissions.

Energy in San Mateo County

ENERGY - GENERAL OVERVIEW

Energy demand is a key piece of an organization's ecological footprint, as energy is used for heat, lighting, plug loads, cooking, transportation, and more. This demand for energy has environmental, social, and economic impacts. Energy sourced from non-renewable resources (oil, gas, and coal) increases carbon emissions, which traps heat in the earth's atmosphere, causing human enhanced global warming and contributing to global climate change. Nonrenewable energy consumption also has a social justice impact because the most vulnerable populations often live in areas hit hardest/first by climate change, and they often live in close proximity to sources of industrial pollution putting them at higher risk for asthma, cardiovascular respiratory disease, cancer and birth defects. Lastly, the cost of fossil fuel energy sources can be unreliable and vulnerable, putting an

Electricity Consumption / Last 12 months



Natural Gas Consumption / Last 12 months



Emissions / Last 12 months



Sustainability Overview



Energy



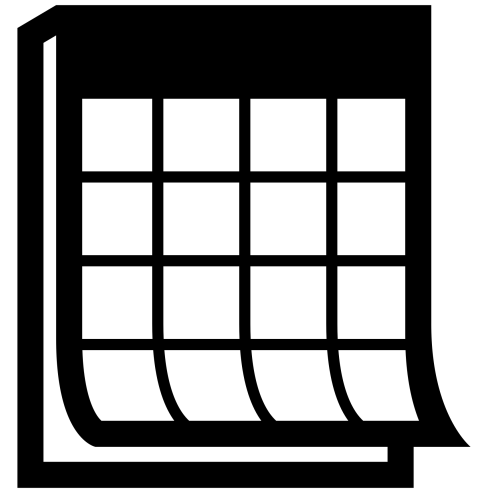
Water



Waste

Dashboard Pilot Timeline

- ❖ Presented at the 2019 San Mateo Environmental Learning Collaborative Summer Institute
- ❖ Dashboard announcement via press release with SMCOE July 2019
- ❖ Launch PCE webpage about pilot July 2019
- ❖ Pilot in San Carlos School District 2019-2020
- ❖ Evaluate results/feedback from San Carlos 2020
- ❖ Potential county-wide replication in 2020-2021



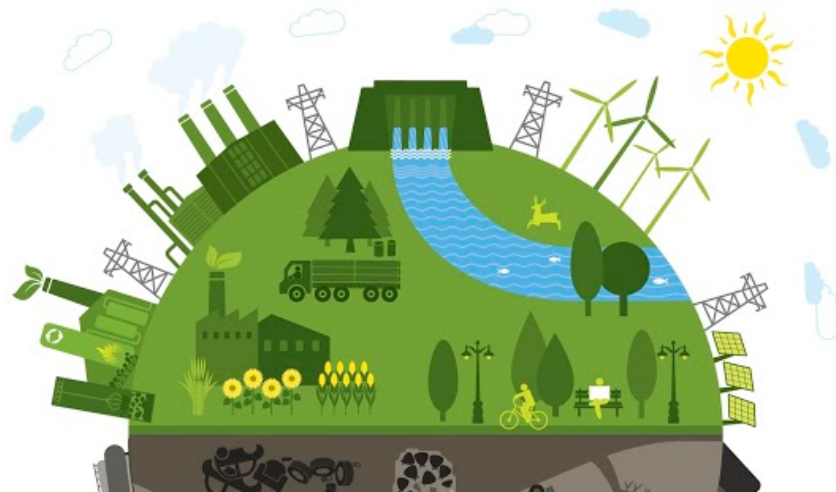
SMELC Clean Energy Teacher Fellowship

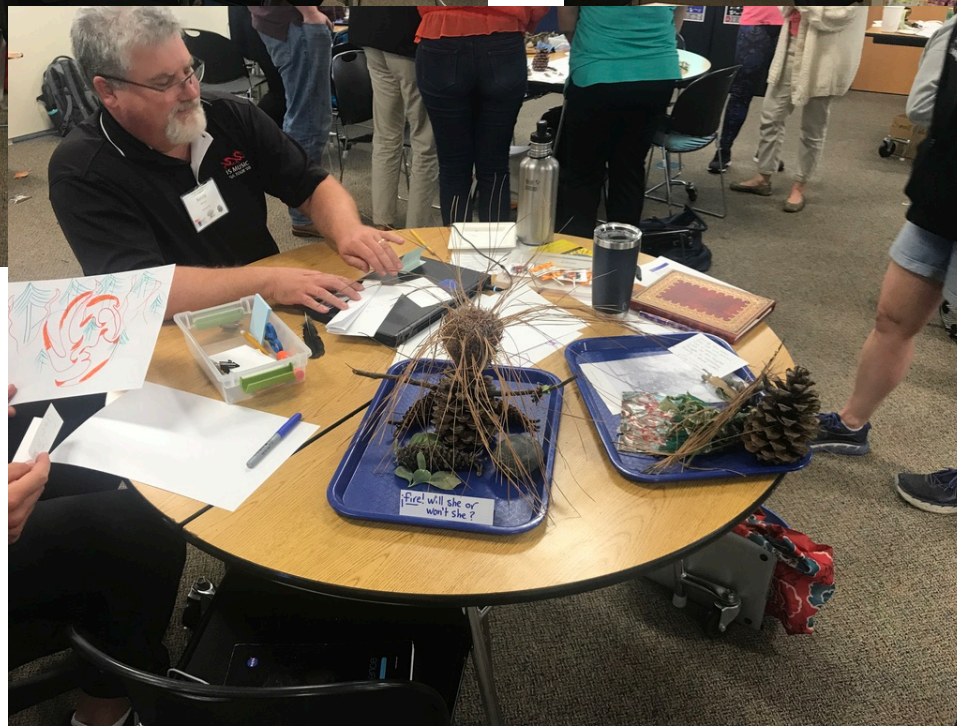
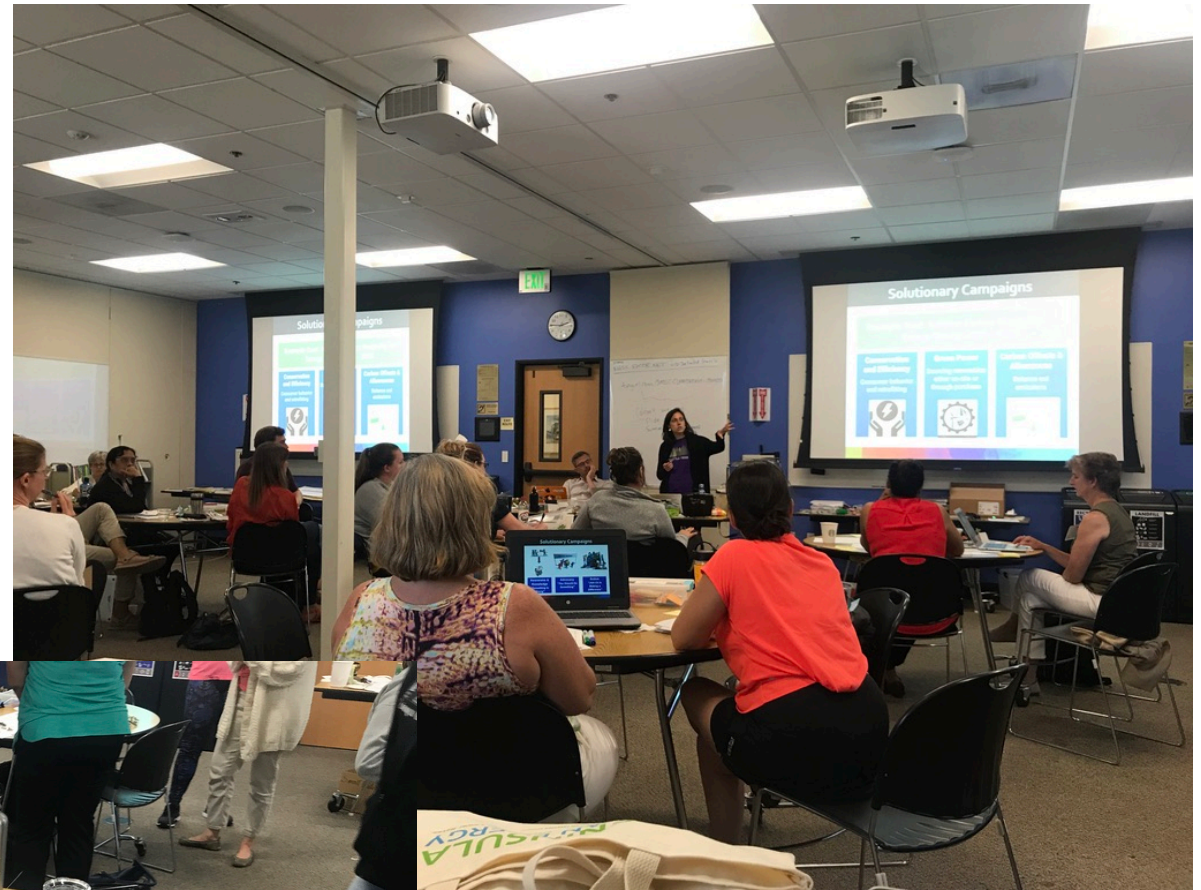
- ❖ **Summer Institute:** Learning intensive
- ❖ **Guided Implementation & Coaching:** Ongoing support from SMCOE
- ❖ **Final Deliverables:** Unit of study, reflection presentation, final ceremony
- ❖ **Community:** Support from community environmental partners
- ❖ **PCE sponsored 2019 Clean Energy Teacher Fellowship**

	PCE Sponsorship of Clean Energy Teacher Fellowship
Grades	Pre-K-12
Subjects	All
Stipend	\$500/teacher
Summer Institute	3 Days June 24-26
Unit Focus	Standards aligned problem-based learning unit focused on Energy Issues.
Professional Development	Eligible for 3 Continuing Education Units

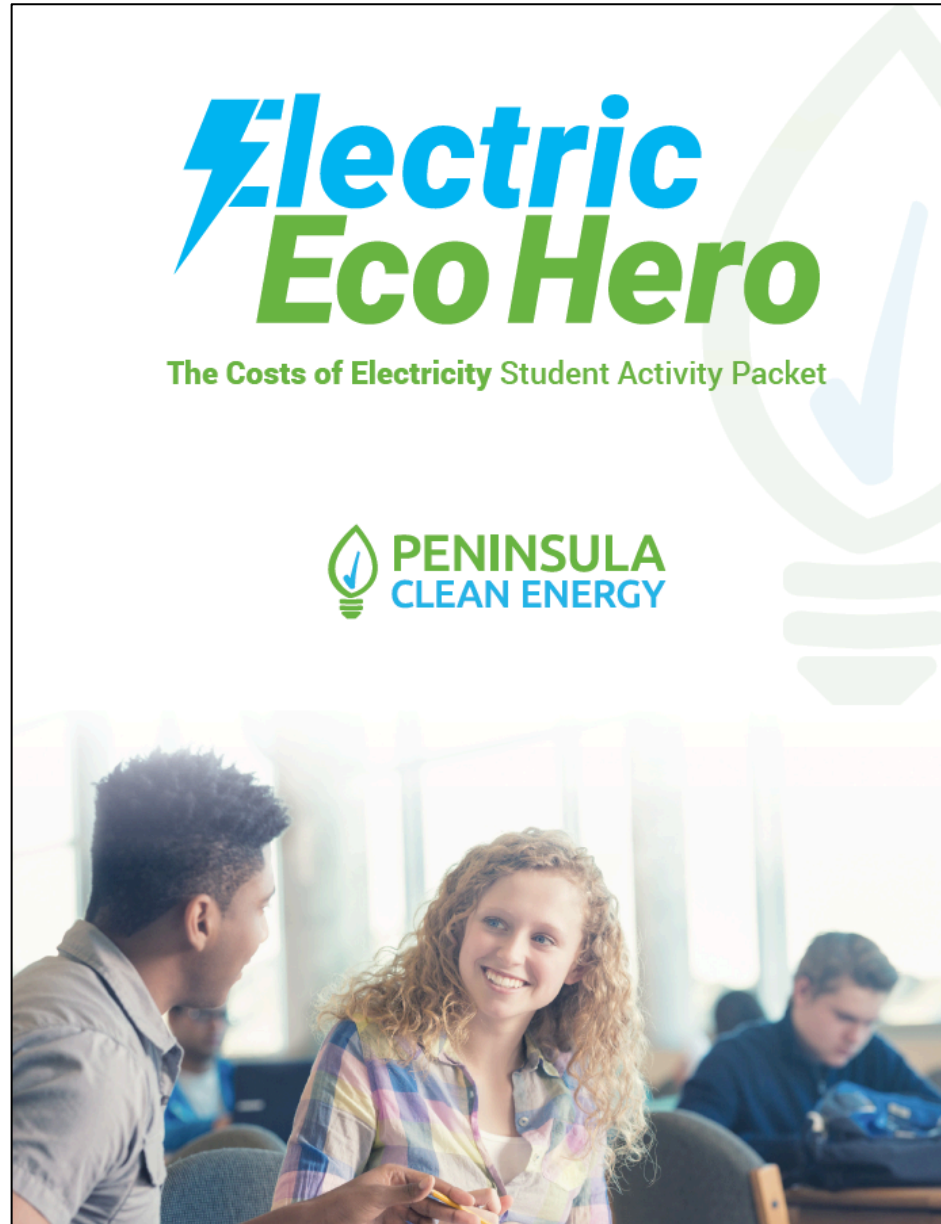
PCE Role in Summer Institute

- ❖ Developed Summer Institute curriculum
- ❖ Welcomed teachers on 1st Day and explained about the work we do
- ❖ Led segment of energy curriculum and explained PCE
- ❖ Presented about PCE Student Activity Packet & Dashboard
- ❖ Serve as a community partner helping teachers develop unit of study





PCE Student Activity Packet



PENINSULA  CLEAN ENERGY

PCE Student Activity Packet

Activity packet for high school math and science students to calculate the environmental and economic costs of electricity in San Mateo County.

Includes:

- ❖ Introduction to climate change and local impacts
- ❖ Renewable energy sources
- ❖ Understanding the PCE/PG&E energy bill
- ❖ Calculating costs of electricity for common appliances
- ❖ Calculating GHG emissions from using common appliances

Created by Andre Tan (local high school math teacher) and refined by Janet Creech (Math & Science Resource Teacher for Sequoia Union High School District) and PCE Communications Team.



Continuing Partnerships

SMCOE Grant Summary

Project	Amount
One Planet Schools Challenge	\$1,000
SMCOE Dashboard	\$9,500
San Carlos School District Dashboard	\$25,000
Clean Energy Fellowship	\$25,000
TOTAL	\$60,500

Future Planning

- ❖ Fund Clean Energy Fellowship 2020
- ❖ Fund dashboard in other school districts

Regular Agenda

6. Approve Fiscal Year 2018-2019 Budget Amendment (Action)

Regular Agenda

7. Fiscal Year 2019-2020 Budget Approval (Action)

Regular Agenda

8. Authorize an Extension to September 1, 2019 for the adjustment in Peninsula Clean Energy's (PCE's) rates to maintain a 5% discount in generation charges compared to PG&E (Action)



PCE 2019 Rate Adjustment

Leslie Brown, Director of Customer Care

2019 Rate Adjustments to-date

- Due to delays in the 2019 ERRA and AET approvals for PG&E, rate changes this year have been more challenging than normal
 - PG&E implemented smaller rate changes affecting Generation and FFS charges in March and May of this year already
 - PG&E will adjust rates again July 1, 2019 to implement new PCIA changes and more adjustments to Generation and FFS

2019 Rate Adjustments to-date

- PCE adjusted rates on May 1, 2019 to account for the March 1, 2019 Generation rate changes and the initial FFS changes
- To maintain a 5% net Generation discount, PCE will need to adjust rates again July 1 to account for structural changes in the PCIA and the remaining PG&E Generation adjustments for 2019.

July 1, 2019 Rate Adjustment Impact

- PCE Staff estimates that the July 1 rate adjustment will have a net positive impact to PCE revenues of \$6.3M
- Projected increased revenues from Generation rate increases is \$14.2M which is then offset by PCIA adjustments of approximately \$8.0M.

Action Requested

Extend staff authorization to September 1, 2019 to adjust PCE rates to maintain a net 5% discount in Generation charges compared to PG&E

Regular Agenda

9. Board Members' Reports (Discussion)

Regular Agenda

Adjourn