

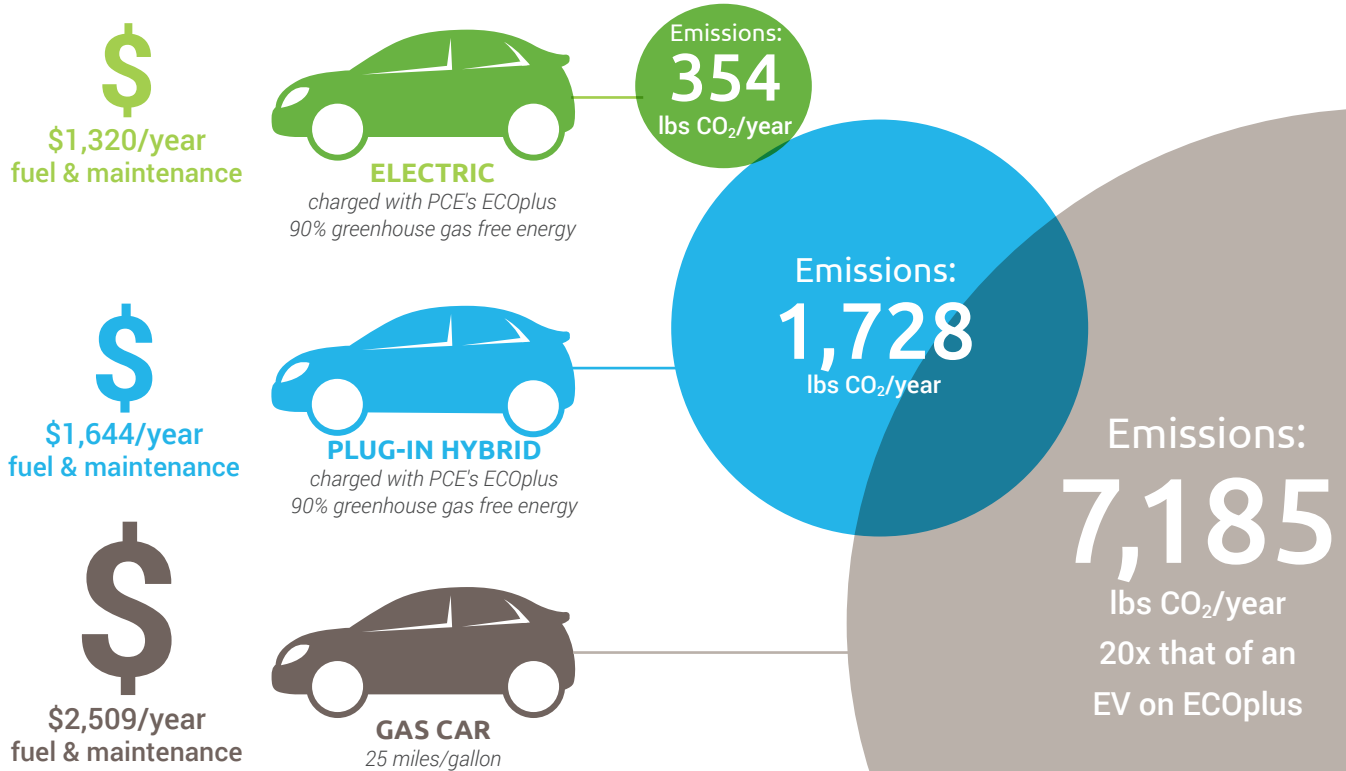
SAVE MONEY WITH AN ELECTRIC CAR

Experience the Benefits:

- Lower fuel & maintenance costs
- Better for the environment
- Easy to charge
- Fast & smooth acceleration

Save money and help the environment by powering your car with electricity instead of gas. Peninsula Clean Energy's cleaner energy at lower rates save San Mateo County residents even more. With up to \$12,000 in federal, state, and local incentives, now's the time to *Go Electric!*

Electric Vehicles (EVs) Compared to Gas



For data sources see www.peninsulacleanenergy.com/ev

Up to \$12,000 in local, state, and federal incentives!

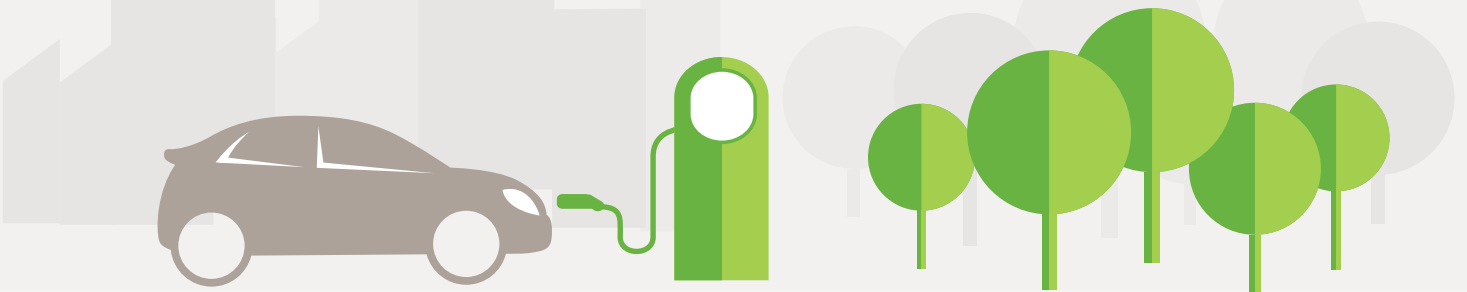
What Type of Electric Car is Best for You?

Fully Electric Vehicle

- Electric motor only
- Greenest option: no more gas!
- Lowest fueling costs
- Simple, low-cost maintenance: no oil changes or smog checks
- Range up to 315 miles on new models
- Federal and state incentives of up to \$10,000 to reduce price
- Currently eligible for carpool stickers

Plug-In Hybrid Electric Vehicle (PEV)

- Both electric motor and gas engine
- Usually use electric range first, then switch to gas-electric hybrid
- All electric range up to 53 miles, plus many more miles on a tank of gas
- Maintain both engine and motor
- Typically lower federal and state incentives
- Currently eligible for carpool stickers



Electric Vehicle Incentives

With federal, state, and local incentive programs* on electric vehicles, now's the time to *drive electric!*

Program	Incentive Amount	Notes
Federal Tax Credit	\$2,500 to \$7,500	Incentive based on battery capacity, vehicle make/model, and tax liability. New vehicles only. Purchase only. Visit: https://tinyurl.com/y37nposb
CA Clean Vehicle Rebate Project (CVRP)	\$1,000 - \$4,500	Rebate based on vehicle type. Has an income cap and increased rebate for low income households. New vehicles only. Purchase or lease. Visit: cleanvehiclerebate.org
CA Clean Vehicle Assistance Program (CVAP)	\$5,000	Low to moderate income only. New or used cars. Purchase only. Optional financing available. Visit: cleanvehiclegrants.org
Clean Cars for All	\$5,500 - \$9,500	Low and moderate income only. Scrap and replace program i.e. must retire an old vehicle. Limited to Bay Area zip codes disproportionately burdened by pollution. Visit: baaqmd.gov/cleanvehiclegrants
PCE DriveForward Electric	\$2,000 - 4,000	Low and moderate income. San Mateo County residents only. Used vehicles only. Purchase only. Visit: PeninsulaCleanEnergy.com/DriveForwardElectric
PG&E Clean Fuel Rebate	\$800	Must be a PG&E customer. New and used cars (under certain conditions). Purchase or lease. Visit: pge.com/cleanfuelrebate

*Please note the above incentives are subject to their own conditions and availability. Visit each program's website for more details. Some programs, such as CVRP, CVAP, and Clean Cars for All, cannot be combined.