



Peninsula Clean Energy Board of Directors Meeting

February 27, 2020

Agenda

- Call to order / Roll Call
- Public Comment
- Action to set the agenda and approve consent items

Regular Agenda

1. Chair Report (Discussion)

Regular Agenda

2. CEO Report (Discussion)

Staffing Update



Welcome!!

- Michael Arnoldo, Digital Marketing Specialist, started on January 27
- Mehdi Shahriari, Senior Renewable Energy Analyst, starting on March 2

Currently recruiting for:

- Manager, Distributed Energy Resource Strategy
- Regulatory Analyst

PCE Strategic Plan Status

- Feb 5 – Strategic planning session with senior PCE staff
- Feb 11 to 26 - Staff work on strategic plan draft
- March 13 – review by Board Strategic Planning Subcommittee
- March 26 – review (and approval) by full PCE Board of Directors
- April – implementation and development of workplans by PCE staff

San Mateo County Status – Reach Codes

New

| Member Agency | Reach Code Status | Building (proposed) | EV |
|--|------------------------------------|-----------------------------------|---------------------|
| Brisbane | Adopted | Electric w/ exceptions | MUD 1xL2/ unit |
| Menlo Park | Adopted | Electric w/ exceptions | (existing EV code) |
| Pacifica | Adopted | Electric w/ exceptions | (existing EV code) |
| County of San Mateo | Adopted | Electric w/ exceptions | PCE model code |
| San Mateo | Adopted | Electric preferred | Increase EV capable |
| San Carlos | Adopted | Pre-wiring on single-family homes | |
| Portola Valley | 1 st reading Mar 25 | (Electric w/ exceptions) | (existing EV code) |
| Redwood City | Study Session Jan 13 | (Electric w/ exceptions) | PCE model code |
| East Palo Alto | Study Session TBD | (Electric w/ exceptions) | PCE model code |
| Belmont | Council Briefing | | |
| Burlingame, Colma, Daly City, Hillsborough | Letter of Intent, Council Briefing | | |
| Millbrae, San Bruno | Letter of Intent | | |
| Foster City, Half Moon Bay | Council Briefing | | |
| South SF | No Action | | |
| Atherton, Woodside | Declined | | |

Santa Clara County
Adopted: 11
In-Progress: 4

Merced Update

- PCE staff presenting to Los Banos City Council in March
- Held discussion with Executive Committee on Feb 10 about PCE policy on adding new jurisdictions
- Seeking volunteers for board subcommittee to evaluate governance, JPA, synergies

Wright Solar Ribbon Cutting!!!

Friday, May 8, 2020 – 10:00 am

We will provide buses



CalCCA 2020 Updates

CalCCA Lobby Day: March 9 and 10 in Sacramento

CalCCA Annual Summit: Nov 16-18 in San Jose

Meetings with Board Members

- Scheduling meetings with each Board member, their Alternate, and City Manager
- Please check your calendars and sign-up for a date in March or early April
- Dates Jan is available:
 - March 23, 25, 27, 30, 31, April 1, 2, 3, 6, 8, 10

Upcoming Meetings

- How to be an Effective Board Member Training
 - Saturday February 29 (10 - 2)
 - Which of you plan to attend?
- Executive Committee:
 - March 9 at 8:00 a.m.
- Audit & Finance Committee
 - Special Meeting March 9 (10am – 1pm)
- Citizens Advisory Committee:
 - March 12 at 6:30 p.m.
- Board of Directors:
 - March 26 at 6:30 p.m.



Regular Agenda

3. Citizens Advisory Committee Report (Discussion)

Regular Agenda

4. Audit and Finance Committee Report (Discussion)

Regular Agenda

5. State Legislative Advocacy (Discussion)



Overview of State Legislative Advocacy

February 27, 2020

Presented by:

Mark Fenstermaker, Pacific Policy Group



Influencers

- Governor/Governor's Office/Agencies & Departments
- Senate
- Assembly
- “Third House” – Lobbyists and Stakeholders

Senate Overview

40 Senators

- 29 Democrats
- 11 Republicans
- 2 PCE Senators (Hill & Wiener)

Leadership

- Senate Pro Tem - Toni Atkins (San Diego)
- Majority Floor Leader – Bob Hertzberg (Burbank)
- Minority Leader – Shannon Grove (Bakersfield)

Assembly

80 Assemblymembers

- 61 Democrats
- 18 Republicans
- 1 Independent
- 3 PCE Assemblymembers (Berman, Mullin, Ting)

Leadership

- Speaker of the Assembly – Anthony Rendon (Los Angeles)
- Majority Leader – Ian Calderon (Los Angeles)
- Minority Leader – Marie Waldron (San Diego)

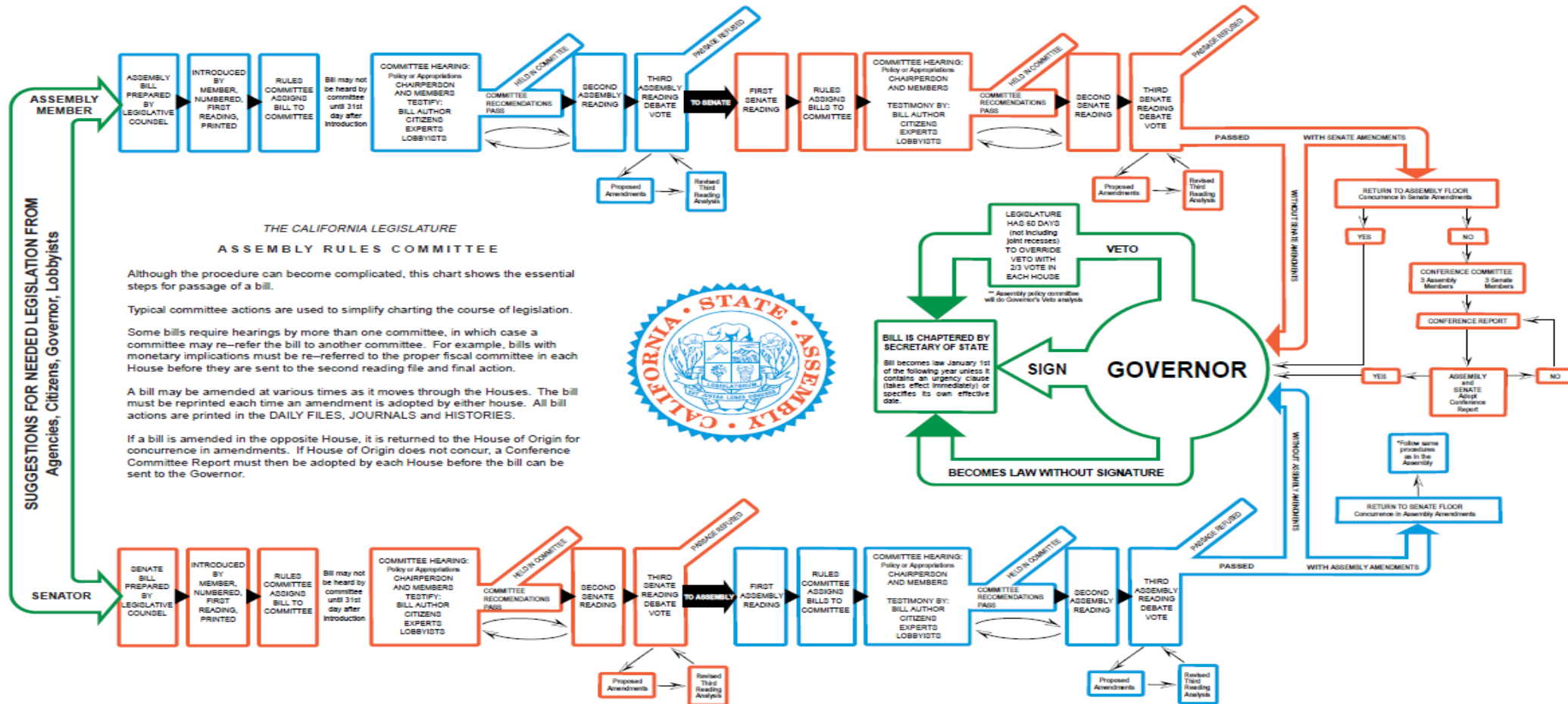
Senate Energy, Utilities & Communications Committee

- Ben Hueso, Chair (D – San Diego)
- John Moorlach, Vice Chair (R – Costa Mesa)
- Steven Bradford (D – Gardena)
- Ling Ling Chang (R – Diamond Bar)
- Bill Dodd (D – Napa)
- Bob Hertzberg (D – Burbank)
- Jerry Hill (D – San Mateo)
- Mike McGuire (D – Healdsburg)
- Susan Rubio (D – Baldwin Park)
- Nancy Skinner (D – Berkeley)
- Henry Stern (D – Malibu)
- Scott Wiener (D – San Francisco)

Assembly Utilities & Energy Committee

- Chris Holden, Chair (D – Pasadena)
- Jim Patterson, Vice Chair (R – Fresno)
- Autumn Burke (D – Inglewood)
- Wendy Carrillo (D – Los Angeles)
- Phillip Chen (R – Yorba Linda)
- Jordan Cunningham (R – San Luis Obispo)
- Susan Talamantes Eggman (D – Stockton)
- Christina Garcia (D – Bell Gardens)
- Eduardo Garcia (D – Coachella)
- Chad Mayes (R – Yucca Valley)
- Al Muratsuchi (D – Torrance)
- Bill Quirk (D – Hayward)
- Eloise Gomez Reyes (D – San Bernardino)
- Miguel Santiago (D – Los Angeles)
- Phillip Ting (D – San Francisco)

Life Cycle of Legislation



Key Legislative Deadlines

First House

- Feb. 21: Bill Introduction Deadline
- April 24: Policy Committee Deadline
- May 17: Fiscal Committee Deadline
- May 29: Floor Deadline

Second House

- June 26: Policy Committee Deadline
- July 3 – August 3 – Summer Recess
- August 14: Fiscal Committee Deadline
- August 31: Last Day of Session

Lifecycle of Lobbying

Key Points of Influence

1. Bill Introduction – Initial Engagement
2. Policy Committees
 - a. Committee Consultant
 - b. Committee Chair
 - c. Committee Members
- c. Appropriations – Hard to Influence
- d. Floor
 - a. Leadership
 - b. PCE Legislators

Budget Process

- Jan 10: Governor Proposes Budget
- March-Mid May: Subcommittee Process
- Mid May: Governor's May Revise
- End of May – June 10: Final Negotiations
- June 15: Deadline for Legislature to submit budget
- June 30: Deadline for Governor to sign or veto budget

Regular Agenda

6. Approve Revised Reserves Policy (Action)



Reserve Policy

*Presentation to Board
February 27, 2020*

Current Reserve Policy

PCE will maintain reserves at the following funding levels:

Operating / Working Capital Reserve equal to 120 days of operating expenses, including power supply expenses:

- The Operating / Working Capital Reserve includes the Rate Stabilization/ Contingency Reserve equal to 15% of projected revenues to mitigate volatility in the power markets and the Power Charge Indifference Adjustment (PCIA).
- If the Rate Stabilization Reserve calculation exceeds 120 days of operating expenses, the Operating Reserve will be increased accordingly.

Reserve Policy – Issues with Current Policy

1. Enough to sustain significant volatility in rates and energy costs?

- Lower than other CCAs

2. Rate Stabilization Reserve:

- Unclear how the Operating Reserve would be adjusted
- Moot at this point because Rate Stabilization Reserve of 15% does not exceed 120 days (revenues would have to exceed \$485 million for the calculation to exceed 120 days of expenses)
- If rates needed to increase to maintain our margins (which would move us from policy of “5% lower than PG&E”), tapping into reserves wouldn’t change our margins
- Tapping into a reserve would mean having to replenish it and explain why we are not in compliance

3. Not limited to unrestricted cash

- Allocation for long-term program commitments
- Funds for collateral/debt covenants, when necessary

Reserve Policy - Research/Input

- Conducted high-level calls with
 - rating agencies
 - Industry expert/consultant
- Other CCAs

Reserve Policy - Research/Discussions/Findings

- More reserves are always better
- 180 days of reserves is less than standard. Could easily see above 250 days in total for reserves
- Specific reserves (e.g. Rate Stabilization, PPA, Debt, etc) would be good, but are more relevant for entities that have debt and coverage ratio covenants
- Bigger reserves (or tapping into them) don't change the income statement picture (i.e. Change In Net Position)
- If the reserve is not required by covenant, and can be changed by Board policy, then a specific reserve, or withdrawal from it, may not matter

Reserve Policy - Other CCAs

Marin Clean Energy changed its Reserve/Liquidity Policy in November 2019

- Approved a resolution to increase its targets by FY2020-21:
 - Reserve Target to ~215 days from the prior target of ~145 days (set as % of Operating Expenses)
 - Liquidity Target (includes Unused Bank Line) to **240 days** from the prior target of 140 days
- Separately approved a resolution to establish an Operating Reserve Fund that would allow “moving” (reducing) revenues/income to the balance sheet in order to be enable movement between balance sheet and income statement to meet bond/debt covenants, if needed

Silicon Valley Clean Energy

- May 2018 - Reserve set at 90 days with a goal of increasing to **180 days** and maximum of 270 days

East Bay Community Energy

- June 2018 – Operating/Credit Reserve set at **~180 days** (set as # of months of Operating Expenses)

Monterey Bay Community Power

- Reserve set at ~110 days with a goal of increasing to **~180 days** and maximum of 270 days (set as % of Operating Expenses)

Reserve Policy – Recommendation

- The Audit & Finance Committee was presented with several options for unrestricted cash reserve level
 - Options from 150, 180, 210 and 240 days
 - Proposal to set current reserve at 180 days and growing to 210 days over the next 4 years
- **A&F Committee Recommendation**
 - Set reserve at 180 days
 - Single reserve
 - Direction to revisit annually to determine if higher reserve level makes sense

Reserve Policy – Recommendation

| | Actual December 31, 2019 | Forecasted June 30, 2020 | Projected June 30, 2024 |
|--|-----------------------------|-----------------------------|----------------------------|
| Total Cash Balance | \$175,426,717 | \$179,974,663 | \$192,373,119 |
| Restricted by Term/Covenant | 13,038,299 | 5,618,194 | - |
| Restricted by Program (not currently part of Policy) | 10,000,000 | 10,000,000 | 20,000,000 |
| Unrestricted Cash | 152,388,418 | 164,356,469 | 172,373,119 |
| Days Cash on Hand (Adjusted for Program Commitments) | 252 | 264 | 244 |
| Current Policy | | | |
| 120 Days Operating Reserve | 72,524,555 | 74,715,498 | 84,746,101 |
| 15% of Projected Revenues | 46,712,219 | 46,712,219 | 39,600,150 |
| Adjusted Reserve based on 15% Test | 72,524,555 | 74,715,498 | 84,746,101 |
| Cash in Excess of Current Reserve Policy | 79,863,863 | 89,640,971 | 87,627,018 |
| Options for Revised Policy | | | |
| 150 Days Reserve | 90,655,693 | 93,394,373 | 105,932,626 |
| Unrestricted Cash in Excess of 150 Days Reserve | 61,732,725 | 70,962,096 | 66,440,493 |
| 180 Days Reserve | 108,786,832 | 112,073,248 | 127,119,152 |
| Unrestricted Cash in Excess of 180 Days Reserve | 43,601,586 | 52,283,222 | 45,253,967 |
| 210 Days Reserve | 126,917,970 | 130,752,122 | 148,305,677 |
| Unrestricted Cash in Excess of 210 Days Reserve | 25,470,448 | 33,604,347 | 24,067,442 |
| 240 Days Reserve | 145,049,109 | 149,430,997 | 169,492,202 |
| Unrestricted Cash in Excess of 240 Days Reserve | 7,339,309 | 14,925,472 | 2,880,917 |

Restricted by Program => the restricted amount in excess of current year's approved spending budget. Estimated amount.

Regular Agenda

7. Schools Program Update (Discussion)



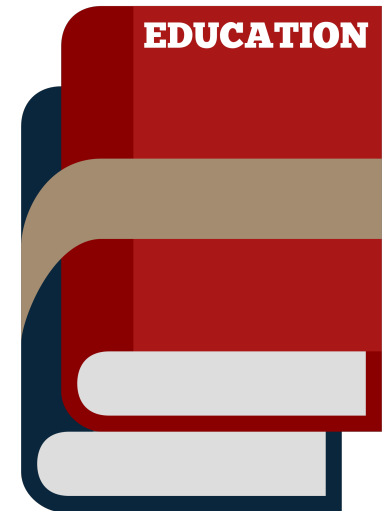
Schools Engagement Update

KJ Janowski, Director of Marketing and Community Affairs
&
Tj Carter, Marketing Specialist

Peninsula Clean Energy & Schools

Goals

- Increase understanding of electricity content, usage, conservation and GHG emissions reduction
- Equip students (and their parents) with an understanding of their electric bill
- Increase understanding of Peninsula Clean Energy
- Encourage participation in Energy Programs (energy resiliency, EV charging infrastructure)



One Planet Schools Challenge

- Recognizes leaders who are driving environmental and social transformation across their school and greater community
- Peninsula Clean Energy will sponsor the Zero Carbon award for \$2,500



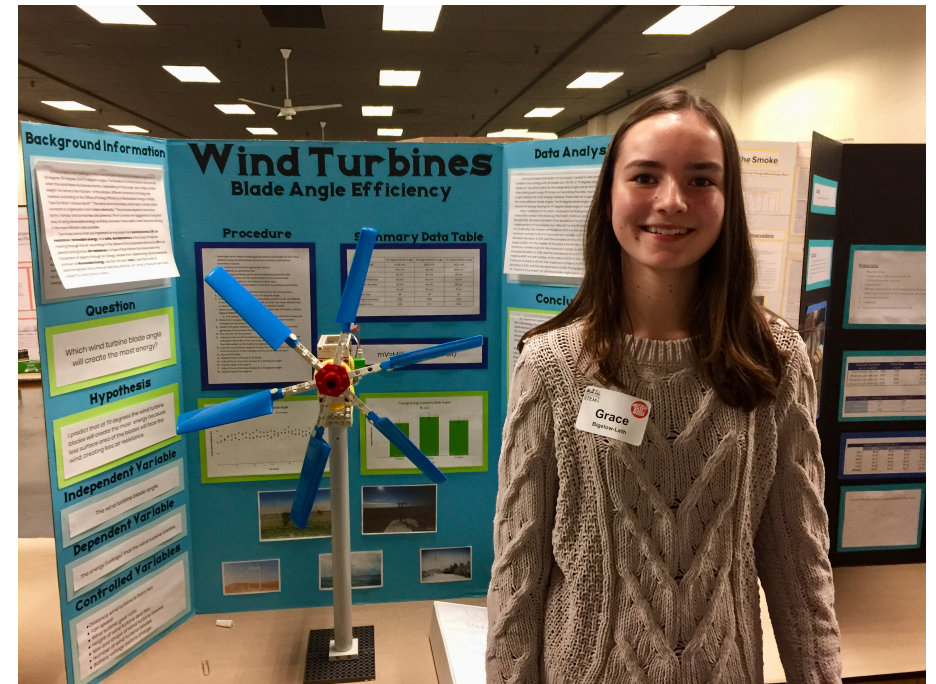
Next Big Think

- Hosted clean energy booth reaching a cumulative 470 parents/students
- Awarded 3 Special Awards



2018: Georgia Hutchinson
Woodside, 7th Grade

2018: Charlotte Sullivan
Belmont, 7th Grade



2019: Grace Bigelow-Luth
Half Moon Bay, 8th Grade

Student Activity Packet

Activity packet for high school math and science students to calculate the environmental and economic costs of electricity in San Mateo County.

Includes:

- Introduction to climate change and local impacts
- Renewable energy sources
- Understanding Peninsula Clean Energy/PG&E energy bill
- Calculating costs of electricity for common appliances
- Calculating GHG emissions from using common appliances

Dashboard Pilot

Goal: Educate teachers and students about energy use.

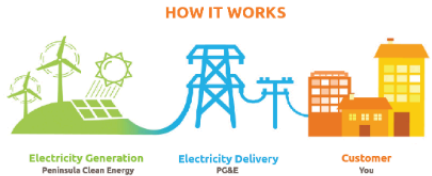
- Online dashboard of school energy use in a student-friendly format that teachers can use in lesson plans
- Peninsula Clean Energy funded pilot for SMCOE (\$9,500) and San Carlos School District (\$25,000)



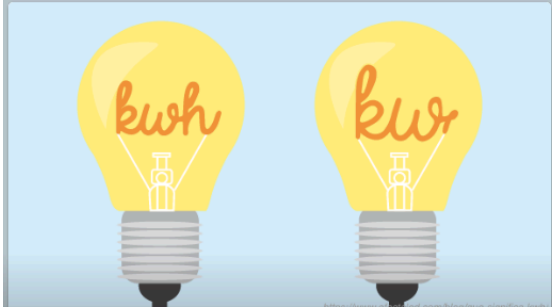
Dashboard Pilot



Energy in San Mateo County



The energy system in San Mateo County is made up of two key organizations: Peninsula Clean Energy (PCE), and Pacific Gas & Electric (PG&E).



ENERGY - GENERAL OVERVIEW

Energy demand is a key indicator of an organization's ecological footprint because its uses vary across the board: heating, lighting, plug loads, cooking, transportation, and much more. The higher the demand for energy, the greater the environmental, social, and economic impacts energy production has.

Energy sourced from non-renewable resources (oil, gas, and coal) increases greenhouse gas emissions (GHGs) which trap heat in the earth's atmosphere causing anthropogenic global warming and climate change. Non-renewable energy consumption has a social justice impact because the most vulnerable populations often live in areas hit first and the hardest by climate change. These populations often live in close proximity to sources of industrial pollution, putting them at higher risk for asthma, cardiovascular respiratory disease, cancer and birth defects. From an economic perspective, the cost of fossil fuel energy sources can be unreliable and vulnerable, putting an organization at risk when prices fluctuate unexpectedly.

Due to these consequences, it is important that schools make a shift to energy that is free of greenhouse gas emissions and sourced from renewables resources while also decreasing their energy demand.

PCE and PG&E in San Mateo County

PCE is a community choice energy (CCE) program, which means it is a locally controlled, community organization that provides customers with a choice of where their energy comes from. PCE sources energy from non-polluting, renewable sources such as solar and wind. They then provide the electricity produced to PG&E for distribution. Through PCE, electricity customers (residential, commercial, or municipal) are given the option to have anywhere from 50% to 100% of their electricity supplied from clean, renewable sources at competitive rates. Click [here](#) to learn more about Peninsula Clean Energy.

PG&E is responsible for the billing of all these services as well as provides the county with natural gas. Once the electricity from PCE is delivered to PG&E, it is distributed to customers across San Mateo County through PG&E's power lines and wires.

Electricity and Natural Gas Units and Terminology

A **watt** is a unit of power that measures electricity - a **watt-hour (Wh)** is a unit of energy that is one watt of power over one hour of time.

A **kilowatt-hour (kWh)** is 1,000 Wh and is used to describe electricity consumption of buildings because Whs are not large enough units of energy.

A **therm (thm)** is another unit of energy that instead measures heat per one hundred cubic feet (CCF) of natural gas.



Sustainability Overview



Energy



Water



Waste



Facilities

Youth Climate Ambassadors Leadership Program



Youth Climate Ambassadors Leadership Program

A year-long paid fellowship which provides 9-11th grade students with the opportunity to:

- Learn about issues contributing to the climate crisis
- Become empowered leaders to act on climate change
- Create a regional network of youth climate change leaders

Program Partners



Youth Climate Ambassadors Leadership Program

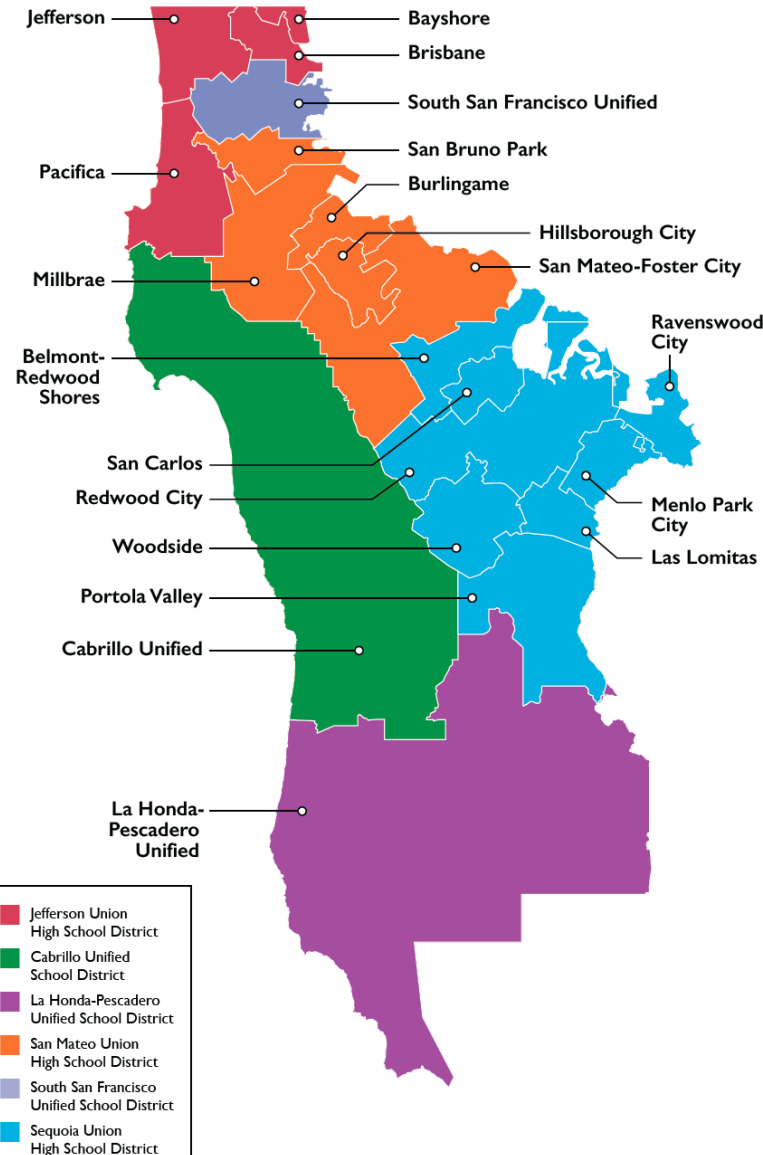
There are five main components to the Fellowship:

- Opening retreat
- Monthly workshops
- Summer retreat
- Community impact project
- Capstone presentation

Youth Climate Ambassadors Leadership Program

Coastal Chapter

- Lead Partner: Office of Sustainability
- 9 Fellows



North Chapter

- Lead Partner: Burlingame CEC
- 13 Fellows

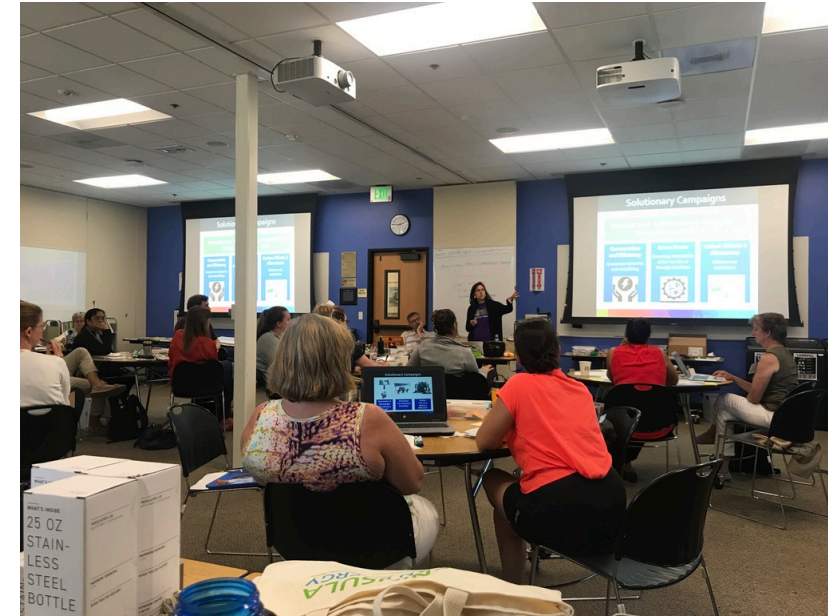
South Chapter

- Lead Partner: SMCOE
- 32 Fellows

Youth Climate Ambassadors Leadership Program

| Budget | | |
|----------------|-----------------------|--|
| Item | Amount | Description |
| Stipend | Up to \$37,500 | \$500 per fellow upon completion of the program |
| Travel Stipend | Up to \$6,720 | \$240 for needs-based travel stipends per fellow |
| Total | Up to \$44,220 | |

Clean Energy Teacher Fellowship



Clean Energy Teacher Fellowship

Clean Energy Teacher Fellowship is a paid fellowship program that helps teachers build capacity for developing lesson plans aimed at increasing environmental literacy, academic success, and civic engagement for a carbon free energy future.

There are three main components to the Fellowship:

- Summer Institute
- Clean energy-focused Unit of study
- Capstone Presentation

Peninsula Clean Energy sponsored 2019-20 Clean Energy Teacher Fellowship for \$25,000

Clean Energy Teacher Fellowship

- 13 teachers completed fellowship in 2019-20 Fellowship
- 970 students reached

| School District | Number of Students Reached |
|-------------------------|----------------------------|
| Jefferson Union | 146 |
| Bayshore Elem. | 100 |
| San Mateo – Foster City | 233 |
| San Mateo Union | 100 |
| Portola Valley | 17 |
| Las Lomitas | 145 |
| Menlo Park City | 95 |
| Redwood City | 20 |
| Ravenswood City | 54 |
| San Carlos | 60 |
| TOTAL | 970 |

Clean Energy Teacher Fellowship

| | Sponsorship of 2020-21 Clean Energy Teacher Fellowship |
|---------------------------------|---|
| Grades | TK-12 |
| Subjects | All |
| Stipend | \$1,000/teacher |
| Institute | 2 Summer Institutes (4 days each) |
| Unit Focus | Standards aligned problem-based learning unit focused on Energy Issues. |
| Professional Development | Eligible for 3 Continuing Education Units |

Clean Energy Teacher Fellowship

| Budget | | |
|-----------------------------------|-----------------------|--|
| Item | Amount | Description |
| Program Planning and Facilitation | \$6,000 | Development and program facilitation: planning fee, facilitation fee |
| Workshop and Capstone Event | \$4,000 | Materials, food, and beverage |
| Teacher Stipend | Up to \$40,000 | \$1,000 stipend for each Clean Energy Teacher Fellow upon completion |
| Instructional Coaching Services | \$30,000 | Instructional Coaching for fellows |
| Program Evaluation | \$10,000 | Program Evaluation |
| Total | Up to \$90,000 | |

SMELC Administrator Fellowship

A year-long paid fellowship program that supports administrators and educational leaders to drive environmental transformation across their school community.

There are four main components to the Fellowship:

- Program workshops
- Develop and implement Action Plan
- Case study write-Up
- Capstone presentation

SMELC Administrator Fellowship

| Title | School | City |
|----------------------------------|--|------------------------|
| Vice Principal | Fernando Rivera Middle School | Daly City |
| Principal | Garden Village Elementary School | Daly City |
| Principal | Lincoln Elementary School | Burlingame |
| Science Teacher on Assignment | Millbrae Elementary School District | Millbrae |
| Principal | Belle Air Elementary School | San Bruno |
| Principal | Rollingwood Elementary School | San Bruno |
| Principal | Portola Elementary | San Bruno |
| Counselor | LEAD Elementary | San Mateo |
| Science Teacher on Assignment | Belmont-Redwood Shores Elem. School District | Belmont/Redwood City |
| Principal | Tierra Linda Middle School | San Carlos |
| Principal | Central Middle School | San Carlos |
| AP-Environmental Science Teacher | Aragon High School | San Mateo |
| Science Teacher on Assignment | Sequoia Union High School District | Redwood City |
| Sustainability Coordinator | Nueva School | Hillsborough/San Mateo |
| Class Advisor | El Camino High School | South San Francisco |

SMELC Administrator Fellowship

| Budget | | |
|-----------------------------------|-----------------------|--|
| Item | Amount | Description |
| Program Planning and Facilitation | \$12,500 | Development and program facilitation: planning fees, facilitation fees |
| Administrator Stipend | Up to \$37,500 | \$2,500 per fellow upon completion of the program |
| Total | Up to \$50,000 | |

Regular Agenda

8. Approve Grant for San Mateo Environmental Learning Collaborative (SMELC) Clean Energy Teacher Fellowship Program (Action)

Regular Agenda

9. Approve Grant for San Mateo Environmental Learning Collaborative (SMELC) Clean Energy Administrator Fellowship Program (Action)

Regular Agenda

10. Board Members' Reports (Discussion)

Regular Agenda

Adjourn