



Peninsula Clean Energy Board of Directors Meeting

December 17, 2020

Agenda

- Call to order / Roll Call
- Public Comment
- Action to set the agenda and approve consent items

Regular Agenda

1. Chair Report (Discussion)

Regular Agenda

2. CEO Report (Discussion)

Today's Updates

- Welcome to new Board Members
 - Training
 - Staff initiated subcommittees of Board members
- COVID-19 Load Impact Analysis
- PCIA Update
- Power On Peninsula Update
- Reach Codes Update
- Upcoming PCE Meetings

Welcome to New Board Members!

- Los Banos – Mayor Tom Faria
- Pacifica – Tygarjas Bigstyck
- Woodside – Jennifer Wall



Board Members and Alternate Training

- Anne setting up calls between Jan and new board members
- Training session will be scheduled for new board members and alternates in the spring

Subcommittees of board members

Staff initiates meetings of subset of interested board members in these areas. Please let Anne know of your interest:

Legislative

Marketing

Power Procurement

Resiliency/Distributed Energy

Strategic Plan

Succession Planning

Workforce Policy

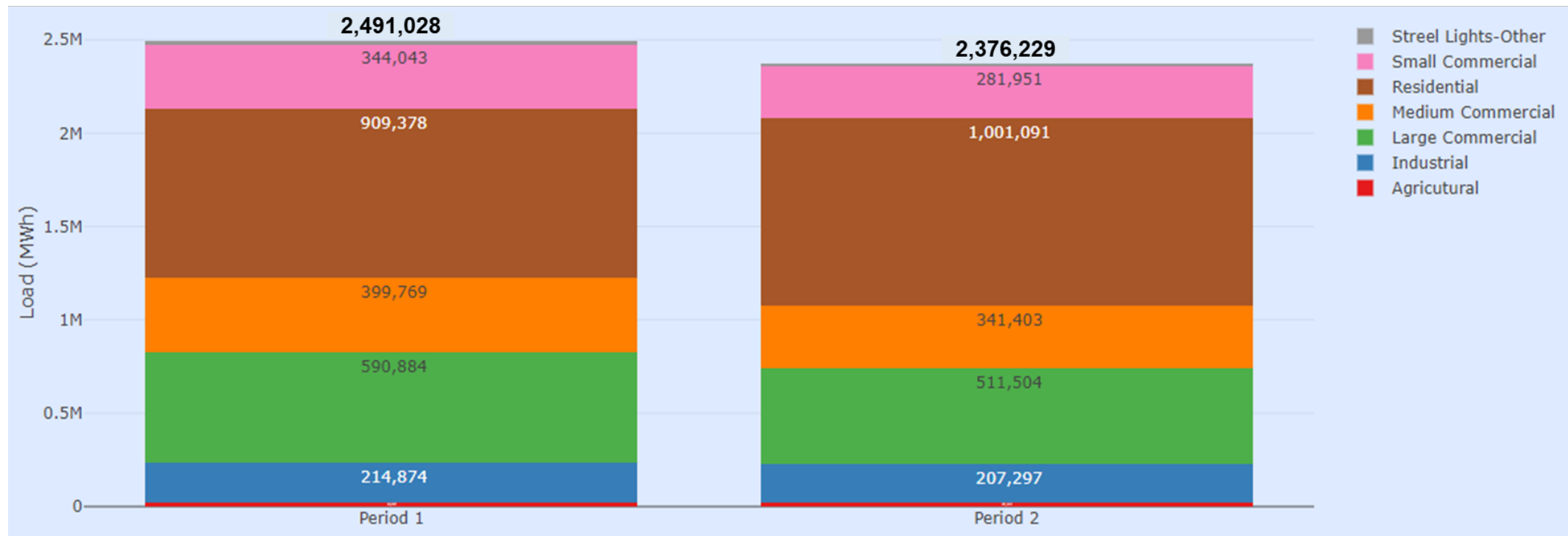
COVID-19 Load Impact Analysis

12/17/2020



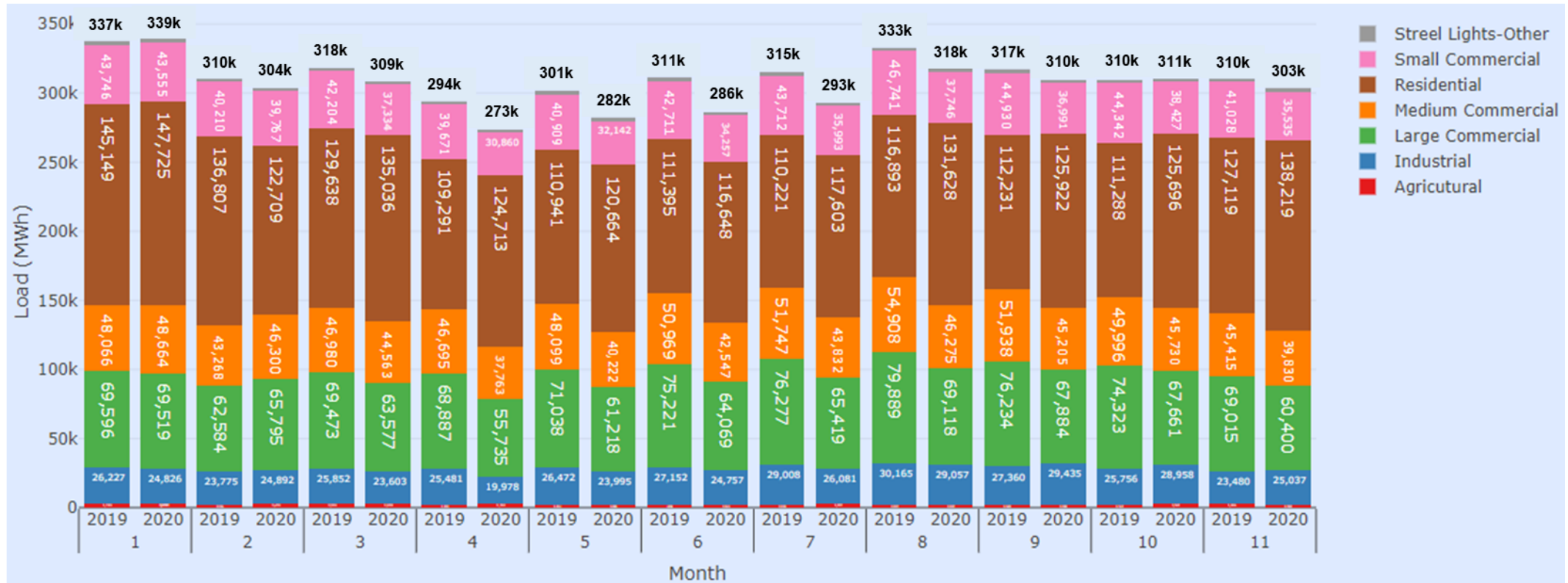
PCE Load after Shelter-in-place order

- April-November 2020 compared to April-November 2019:
 - 5% decrease in Total PCE load compared to same period in 2019.
 - Around 13% decrease in C&I load
 - Around 10% increase in residential load



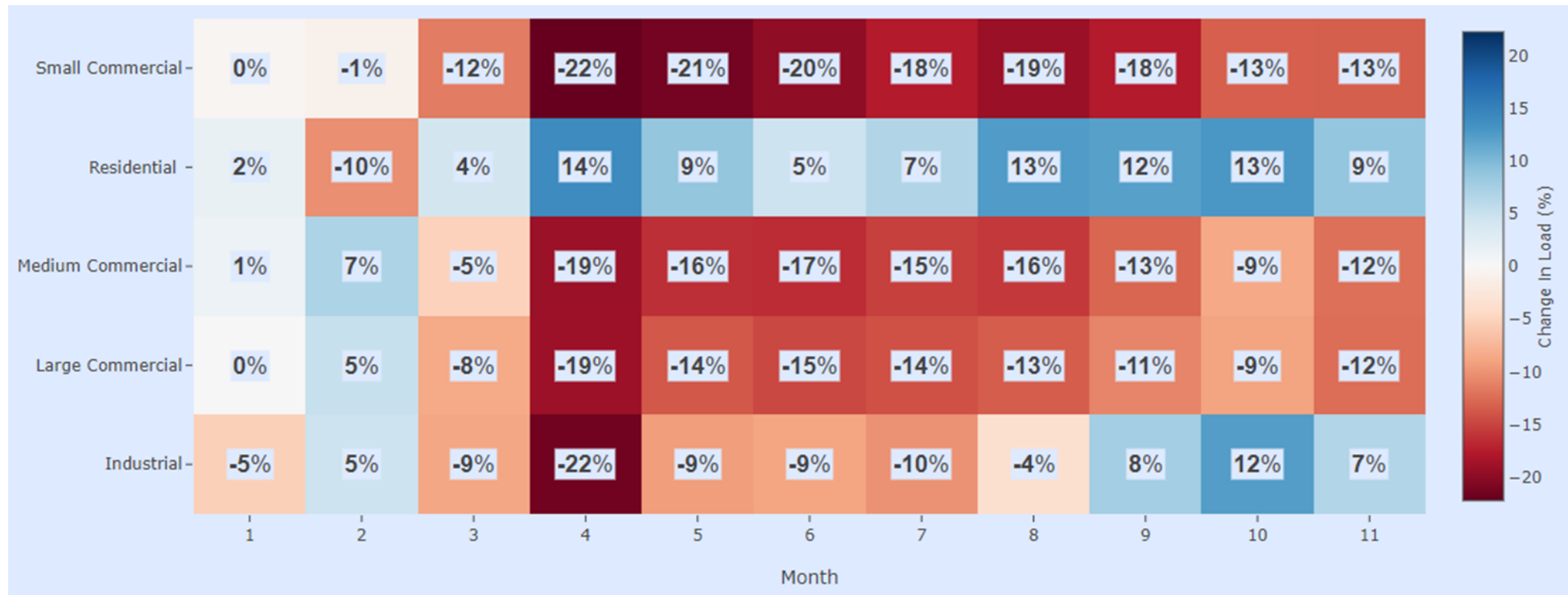
Monthly Load

- 7% decrease in PCE's monthly load in first few months after COVID (March through July of 2020 compared to same months in 2019)
- Only 2% decrease in August-November of 2020 (compared to same months in 2019)



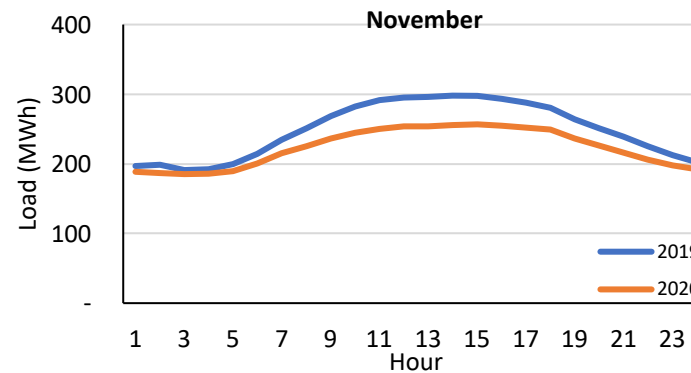
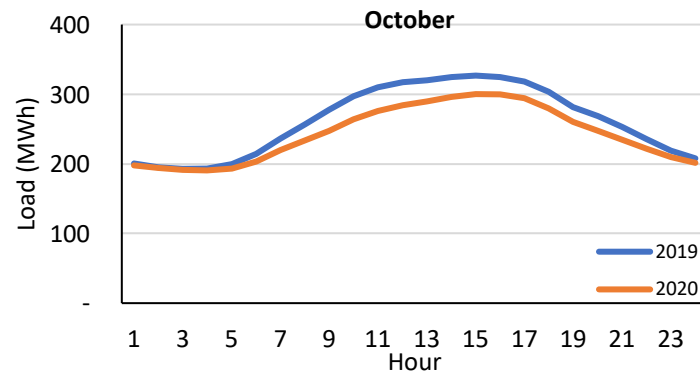
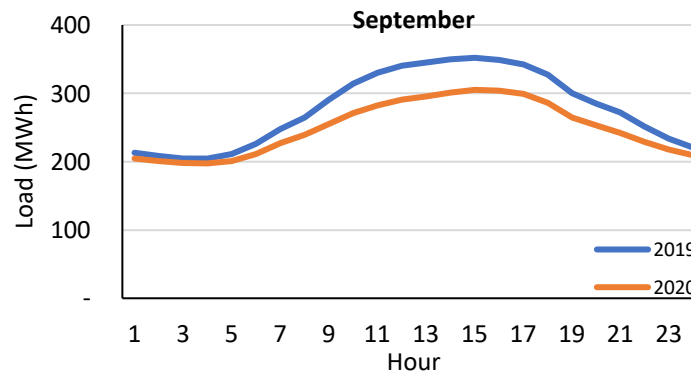
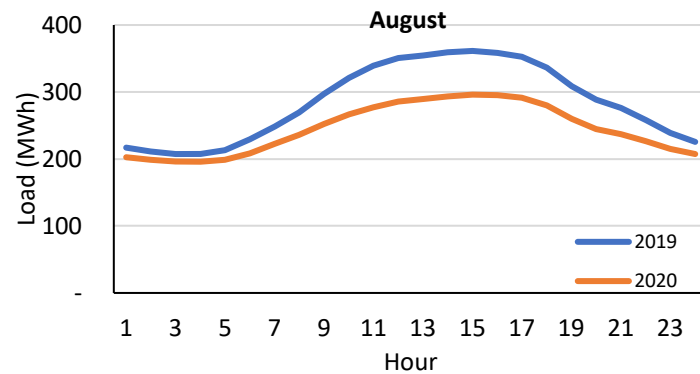
Monthly Load Changes by Customer Class

- Decrease in C&I load, increases in residential load in each month compared to same month in 2019.



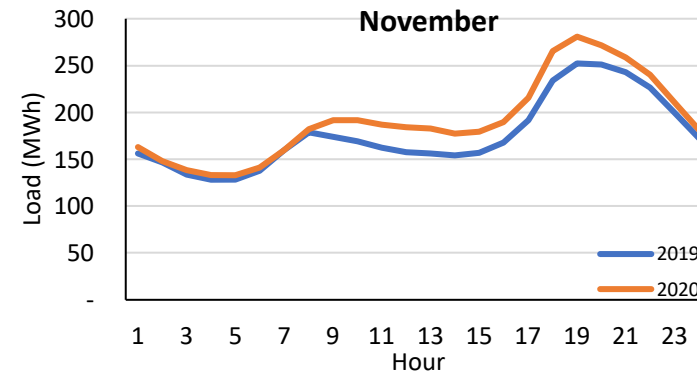
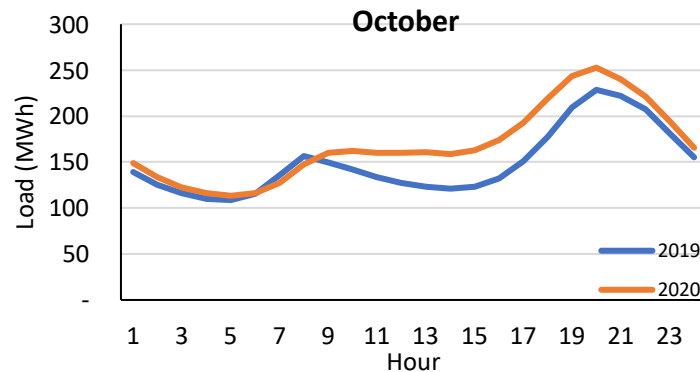
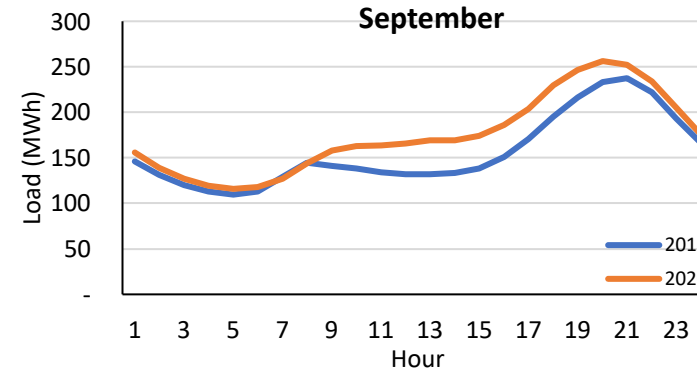
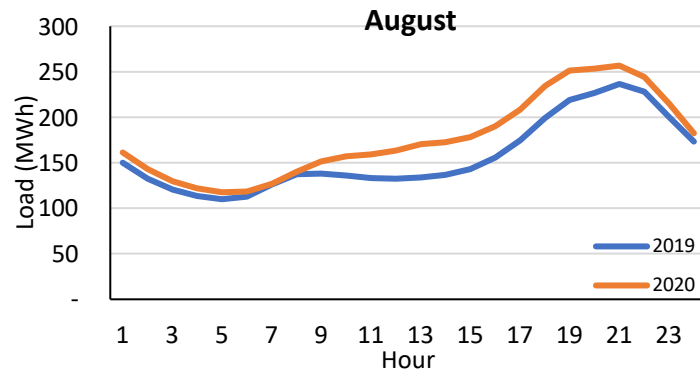
Load Shapes (C&I)

- 2020 commercial load shapes (orange lines) are scaled down compared to 2019 (blue lines)



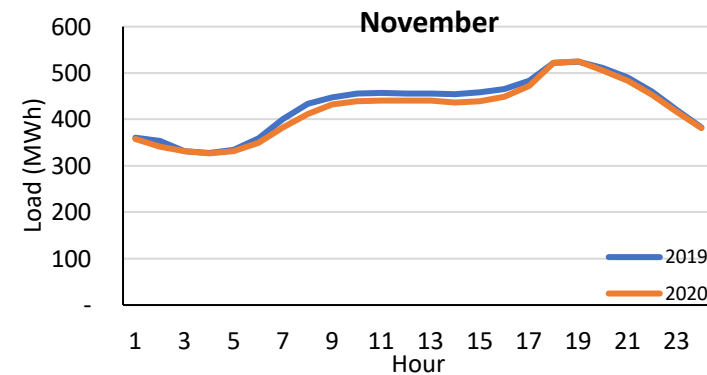
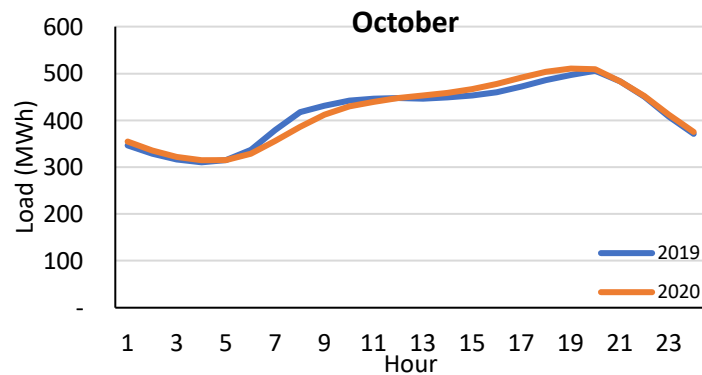
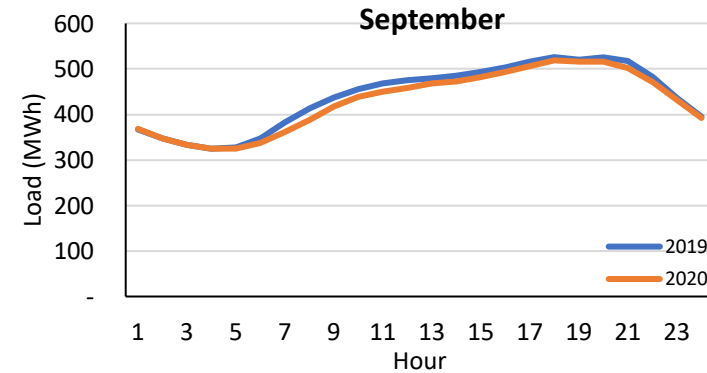
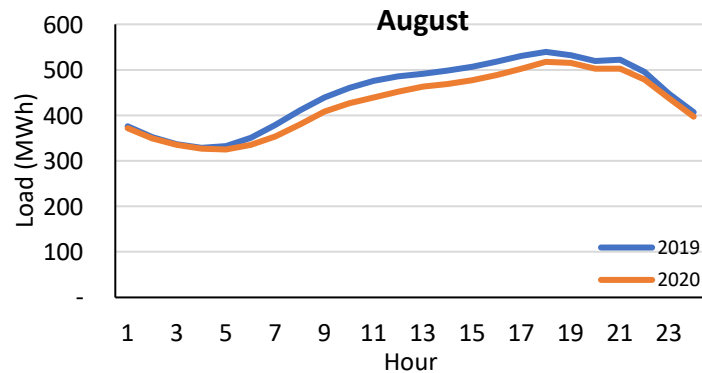
Load Shapes (Residential)

- 2020 residential load shapes (orange lines) have changed compared to 2019 shapes (blue lines):
 - No drop-off during mid-day
 - Bigger increase in August-October due to heatwaves and smoke



Load Shapes (PCE)

- August, September, November: 2020 PCE load shapes (orange lines) have scaled down compared to 2019 shapes (blue lines)
- October: 2020 load marginally higher than 2019 load



PCIA Update

- CPUC decision today re ERRRA forecasts and PCIA triggers:
 - PUBA (undercollections) will be amortized over 36 months (2021 through 2023)
 - No PCIA cap will apply for 2021
 - No 2021 PCIA trigger will result due to no PCIA cap
 - Better data transparency
- PCE will be running the numbers to determine the impact on rates and will bring to Executive Committee and PCE Board in January

Power On Peninsula Medical: Update

- Offering clean backup power through solar+battery storage or portable backup batteries
- Priority customers: High Fire Threat Districts, affected by previous PSPS events, low income CARE/FERA and Medical Baseline customers
- Close collaboration with partners allowed us to provide batteries to all customers with medical devices impacted by 2020 PSPS events who requested one
- Update as of today:
 - GoalZero has delivered 150 batteries and 100 portable solar panels to Hassett Hardware
 - PCE has qualified 118 customers to receive 128 batteries and 29 foldable solar panels
 - Hassett has completed deliveries to all eligible customers
 - PLUS \$5000 donated to Puente de la Costa Sur for hotel vouchers for those displaced by wildfire evacuations.

San Mateo County Status – Reach Codes

| Member Agency | Reach Code Status | Building (proposed) | EV |
|---------------------|--|--|--------------------------|
| Brisbane | Adopted | All-electric w/ exceptions | MUD 1xL2/ unit |
| Burlingame | Adopted | All-electric w/ exceptions | PCE model code (variant) |
| East Palo Alto | Adopted | All-electric w/ exceptions | PCE model code (variant) |
| Millbrae | Adopted | All-electric w/ exceptions | PCE model code (variant) |
| Menlo Park | Adopted | All-electric w/ exceptions | (existing EV code) |
| Pacifica | Adopted | All-electric w/ exceptions | (existing EV code) |
| County of San Mateo | Adopted | All-electric w/ exceptions | PCE model code |
| Redwood City | Adopted | All-electric w/ exceptions | PCE model code |
| San Mateo | Adopted | All-electric w/ exceptions (updated) | Increase EV capable |
| San Carlos | Adopted | Pre-wiring on single-family homes (considering all-electric) | |
| Portola Valley | 1 st reading TBD | (All-electric w/ exceptions) | (existing EV code) |
| New | Belmont, Daly City, San Carlos, South SF | Scheduling Q1 Council study session | |
| | Colma, Foster City, Half Moon Bay, Hillsborough, San Bruno | Letter of Intent, Staff discussions or Council briefing done | |
| | Atherton, Woodside | Declined | |

Santa Clara County
Adopted: 12
In-Progress: 3

Upcoming Meetings

- These meetings will continue to be held by video/teleconference
- Executive Committee:
 - January 11 at 8:00 a.m.
- Citizens Advisory Committee:
 - January 14 at 6:30 p.m.
- Board of Directors:
 - January 28 at 6:30 p.m.



Regular Agenda

3. Citizens Advisory Committee Report (Discussion)

Regular Agenda

4. Approve Addendum No.1 to the Community Choice Aggregation Implementation Plan and Statement of Intent to Address PCE Expansion to the City of Los Banos, CA (Action)



Approval of Los Banos Implementation Plan Addendum

Leslie Brown

Director of Customer Care

12/17/2020



Addendum Highlights

- Required by CPUC for new and/or expanding CCA territories
- Amends original PCE Implementation plan to include Los Banos details such as:
 - Enrollment timeline and customer noticing plan
 - Projected new customer count
 - Projected new retail sales through 2025
 - Projected new procurement obligations through 2025
- PCE Staff coordinating with outside council to submit to the CPUC immediately following Board vote

Questions?

Regular Agenda

5. Approve Peninsula Clean Energy Participation in California Community Power (CC Power) Joint Powers Authority and Delegate Authority to the Chief Executive Office to Execute the CC Power Joint Powers Authority Agreement (Action)



California Community Power JPA

Executive Committee
December 7, 2020



Action Requested

- Approve Peninsula Clean Energy participation in California Community Power (“CC Power”) Joint Powers Authority and Delegate authority to CEO to Execute CC Power JPA Agreement

Agenda

- Participating CCAs
- Business/Political Context
- Joint Procurement with CCAs
- Long-Duration Storage Request for Offers
- JPA Agreement
- Project- and CCA-specific Agreements

Participating CCAs



9 CCAs by the Numbers

| CCA considering Super JPA | Annual Load 2019 (GWh) | Est Peak Load (MW) | Customer Accounts |
|--------------------------------|------------------------|--------------------|-------------------|
| Central Coast Community Energy | 3,094 | 679 | 275,750 |
| Clean Power SF | 2,706 | 460 | 380,000 |
| East Bay Community Energy | 5,819 | 990 | 533,000 |
| Marin Clean Energy | 5,275 | 505 | 470,000 |
| Peninsula Clean Energy | 3,600 | 733 | 293,000 |
| Redwood Coast Energy | 699 | 125 | 62,000 |
| San Jose Clean Energy | 3,286 | 1,081 | 332,500 |
| Silicon Valley Clean Energy | 3,898 | 800 | 270,000 |
| Sonoma Clean Power | 2,360 | 417 | 227,000 |
| Total | 30,737 | 5,790 | 2,843,250 |

Benefits of Joint Action through CC Power

- Economies of Scale
- Enhanced Negotiating Power
- Shared Risk – execution, development and performance
- Potential for Shared Financing
- Strategic value demonstrating CCA self-procurement & reliability contributions
- Large and growing need for reliability resources with gas plants and Diablo Canyon going offline
- Utility-centric state-ordered procurement mandates or allocations can result in cost allocation to CCAs
- Legislators and regulators favor large scale procurement

Long Duration Storage RFO

- Joint CCAs issued a Request for Offers (RFO) for long-duration storage resources
 - Grid-charged long duration storage technology with a minimum of 8 hours of discharge duration
 - In front of the meter
 - Commercial operation by 2026
 - Minimum delivery term of 10 years
 - 50 MW minimum per project participant

RFO Schedule

Over 50 developers submitted offers for multiple projects in response to the Long Duration Storage RFO.

| Activity | Scheduled Date |
|---|---|
| Issuance of RFO | October 15, 2020 |
| Offerors' Webinar | October 28, 2020 at 3:30 PM PST |
| Deadline to submit questions | October 30, 2020 at 5:00 PM PST |
| Responses to questions provided | November 2, 2020 at 5:00 PM PST |
| Deadline to submit proposals | <u>December 1, 2020 at 5:00 PM PDT</u> |
| Proposal Clarification Contact Period (Tentative) | December 1– February 2, 2021 |
| Notification of final shortlisted Bidders (Tentative) | March 2, 2021 |
| PPA negotiations | March – July 2021 |
| Final contract approval | July 2021 |

JPA Agreement: General Overview

- JPA given broad powers that match its Members' powers
- Purpose is “to develop, acquire, construct, own, manage, contract for, engage in, finance and/or provide energy related programs for the use of and by its Members”
- Members may exit the JPA, but must pay pro-rata share of previously-incurred debts
- Modeled after NCPA and SCPPA (municipal utilities)

JPA Agreement: Governance Overview

- JPA Board composed of Members' CEOs (or designee)
 - Equal voting shares
 - Majority of attending directors for simple changes
 - 2/3 of entire Board for significant changes
-
- Any decision to participate in a project or approve PCE expenditures for CC Power of more than \$100k would come to PCE board for approval first

JPA Agreement: Key Features

- JPA administrative costs shared equally among Members
- Part-time contract General Manager, General Counsel
- Expected costs of \$10k-\$30k annually for G&A
- Majority of costs assigned to projects

Project Development

CC Power Projects - 3 Phase process



Project Risk Mitigation

- Project commitment
 - Power Purchase Agreement between CC Power and Developer
 - Identifies that developers sole remedy is to the project participants as outlined in the project participation agreement
 - Project Participation Agreement between JPA members participating in project
 - May include step-up provisions to remedy other project participants' non-performance
- Project Operating Agreement between JPA members participating in project

Timeline

- CCA approval by governing boards – Dec 2020 and Jan 2021
- JPA agreement signed – Feb 2021
- First CC Power board meeting – Feb 2021

- LDS Storage bid evaluation – Dec 2020 to Feb 2021
- Negotiate PPA – Feb to Oct 2021
- Finalize PPA, Project Participation and Operating Agreements – Oct 2021

Recommendation - Action

- Approve Peninsula Clean Energy participation in California Community Power (“CC Power”) Joint Powers Authority and Delegate authority to CEO to Execute CC Power JPA Agreement

Regular Agenda

6. Approve Resolution Delegating Authority to the Chief Executive Officer to Execute a Power Purchase Confirmation Agreement (PPA) for Renewable Supply from the Voyager Wind project with Shell Energy North America (US), L.P. a Delaware limited partnership, and any necessary ancillary documents. Power Delivery Term: January 1, 2021 through December 31, 2028, in an amount not to exceed \$125,000,000 (Action)

6. Approve Voyager Wind PPA

Siobhan Doherty, Director of Power
Resources

December 17, 2020

Agenda

- Project Overview
- Generation Profile
- Fit with Portfolio

Recommendation

Approve resolution delegating authority to the Chief Executive Officer to execute a Power Purchase Confirmation Agreement (PPA) for Renewable Supply from the Voyager Wind project with Shell Energy North America (US), L.P., a Delaware limited partnership, and any necessary ancillary documents. Power Delivery Term: January 1, 2021 through December 31, 2028, in an amount not to exceed \$125,000,000 (Action).

Shorter Term RE RFP

- Peninsula Clean Energy published an RFP soliciting contract proposals of 2 – 8 years in term length
- One of our Strategic IRP Targets is diversity in term lengths in our resource portfolio
- RFP targeted medium (1-4 year) and intermediate (5-10 year) term contracts

Voyager 2 Wind – Project Summary

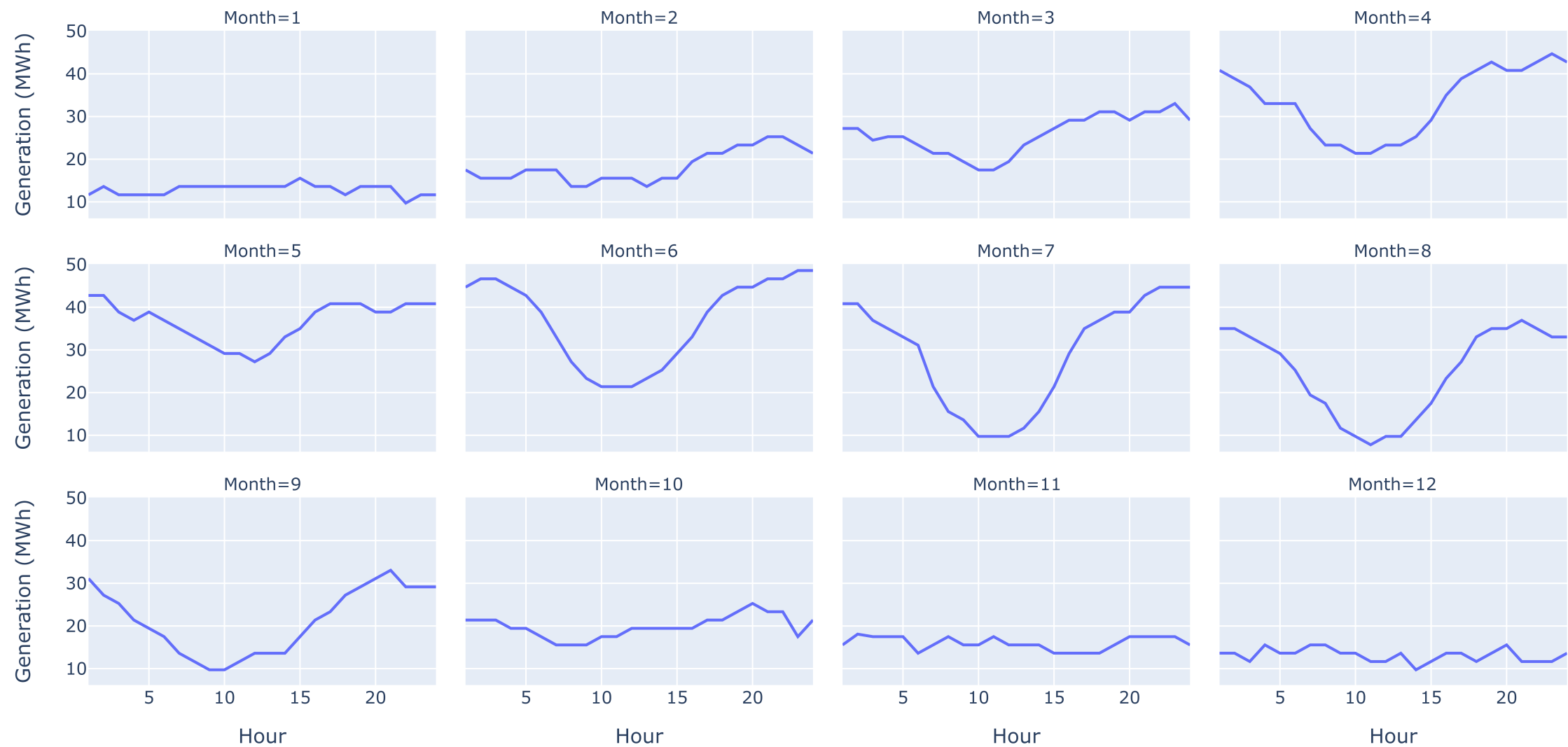
| | Project Characteristics |
|-------------------|--|
| Location | Mohave, CA |
| Capacity | Peninsula Clean Energy Portion: ~63 MW Total: ~126 MW |
| Capacity Factor | 38% |
| Annual Generation | 209 GWh for Peninsula Clean Energy's portion |
| COD | 12/31/2018 |
| Delivery Start | 1/1/2021 |
| Term | 8 years |
| Notes | In operation, shorter term PPA to meet term length diversity goals |



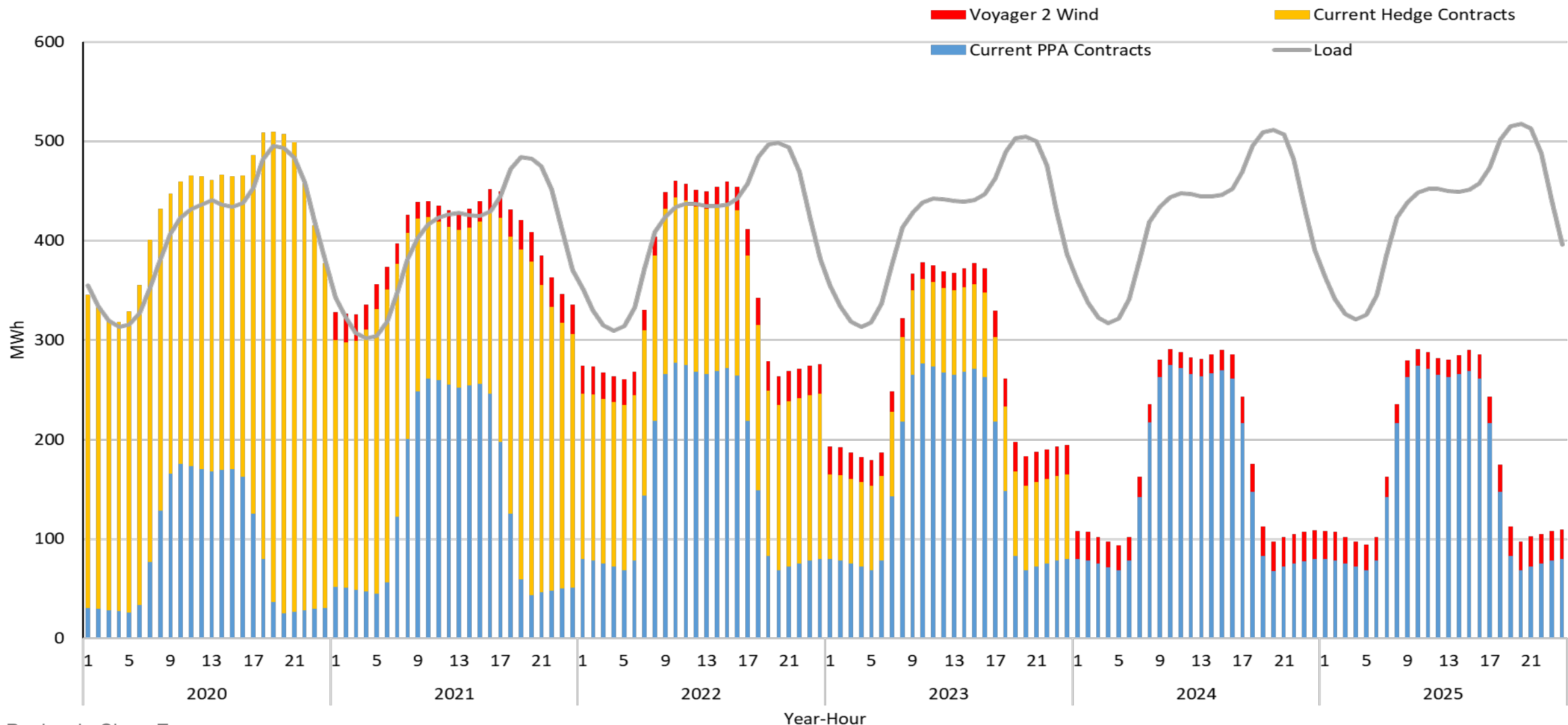
Contract Structure

- Project is owned by Terra-Gen Power
- Shell Energy North America (SENA) has a long-term power purchase agreement with the project
- Peninsula Clean Energy contracting with SENA to purchase a portion of the project's output
- SENA's managed, owned, and contracted renewable projects add over 11,000 GWh of carbon free energy to the grid each year.
 - 1.6GW+ Solar generation
 - 5GW Wind operating or in development

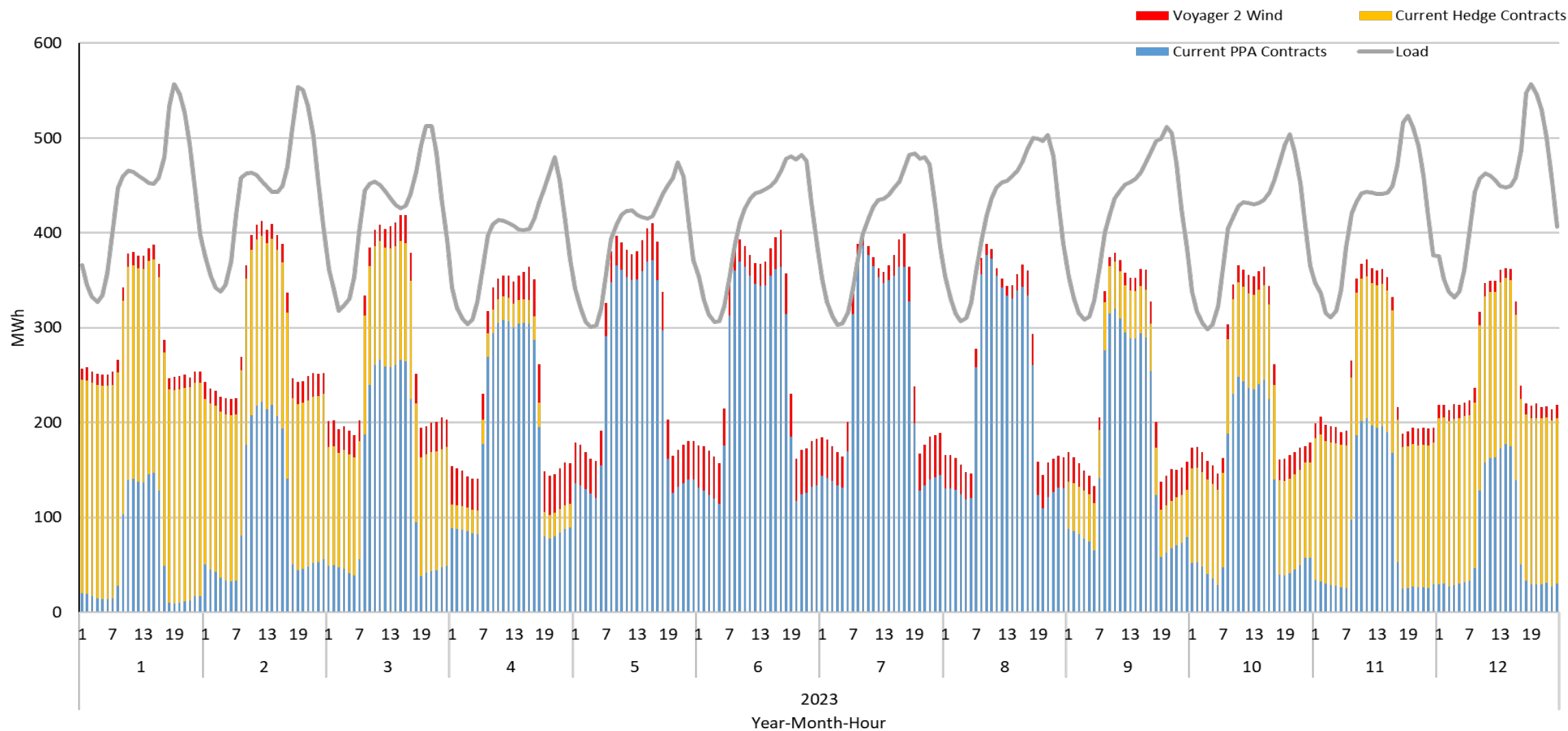
Generation Profile



Year-Hour Shape



Month-Hour Shape 2023



Fit with Strategic Plan

- Priority 1: Design a power portfolio that is sourced by 100% carbon free energy by 2025 that aligns supply and consumer demand on a 24x7 basis
- Power Resources Goal 1: Secure sufficient, low-cost, clean sources of electricity that achieve Peninsula Clean Energy's priorities while ensuring reliability and meeting regulatory mandates
 - Objective A Low Cost and Stable Power: Develop and implement power supply strategies to procure low-cost, reliable power.
 - Key Tactic 4: Secure sufficient, low-cost, clean sources of electricity that achieve Peninsula Clean Energy's priorities while ensuring reliability and meeting regulatory mandates
 - Objective B Clean Power: Design a diverse power portfolio that is 100% carbon-free by 2021; and is 100% carbon-free by 2025 that aligns supply and consumer demand on a 24 x 7 basis.
 - Key Tactic 2: Secure additional contracts for renewable energy procurement in alignment with strategies and portfolio identified through IRP process and in compliance with risk management strategy

Recommendation

Approve resolution delegating authority to the Chief Executive Officer to execute a Power Purchase Confirmation Agreement (PPA) for Renewable Supply from the Voyager Wind project with Shell Energy North America (US), L.P., a Delaware limited partnership, and any necessary ancillary documents. Power Delivery Term: January 1, 2021 through December 31, 2028, in an amount not to exceed \$125,000,000 (Action).

Regular Agenda

7. Approve Resolution Delegating Authority to the Chief Executive Officer to execute a Contract and any necessary ancillary documents with Z-Global, Inc. for Scheduling Coordinator Services, Congestion Revenue Rights Portfolio Management and Short-term Load Forecasting in an amount not to exceed \$850,000 with a term from February 1, 2021 through January 31, 2024 (Action)

Execute Contract with ZGlobal Inc. for Scheduling Coordinator, Congestion Revenue Rights Portfolio Management, and Forecasting Services

Chelsea Keys, Power Resources Manager

December 17, 2020

Agenda

- Background
- PCE Scheduling Coordinator ID
- Request for Proposals
- ZGlobal Inc.
- Agreement Terms

Recommendation

Approve Resolution Delegating Authority to Chief Executive Officer to Execute an Agreement with ZGlobal Inc. with terms consistent with those presented, in a form approved by the General Counsel, and for a term of three years in an amount not to exceed \$850,000.



Background

- PCE supplies load in the California Independent System Operator (CAISO) Market, requiring support from a Scheduling Coordinator (SC) who operates a 24-hour trading desk
- SCs require a certification from CASIO to bid load and resources, and manage Congestion Revenue Rights (CRRs)
- In 2016, the Board authorized an agreement with Energy America, LLC (Direct Energy) to provide load SC services, CRR portfolio management, and short-term load forecasting.
 - Agreement expires on Dec. 31, 2020
 - Requesting approval to extend contract through Jan. 31, 2021

PCE Scheduling Coordinator ID

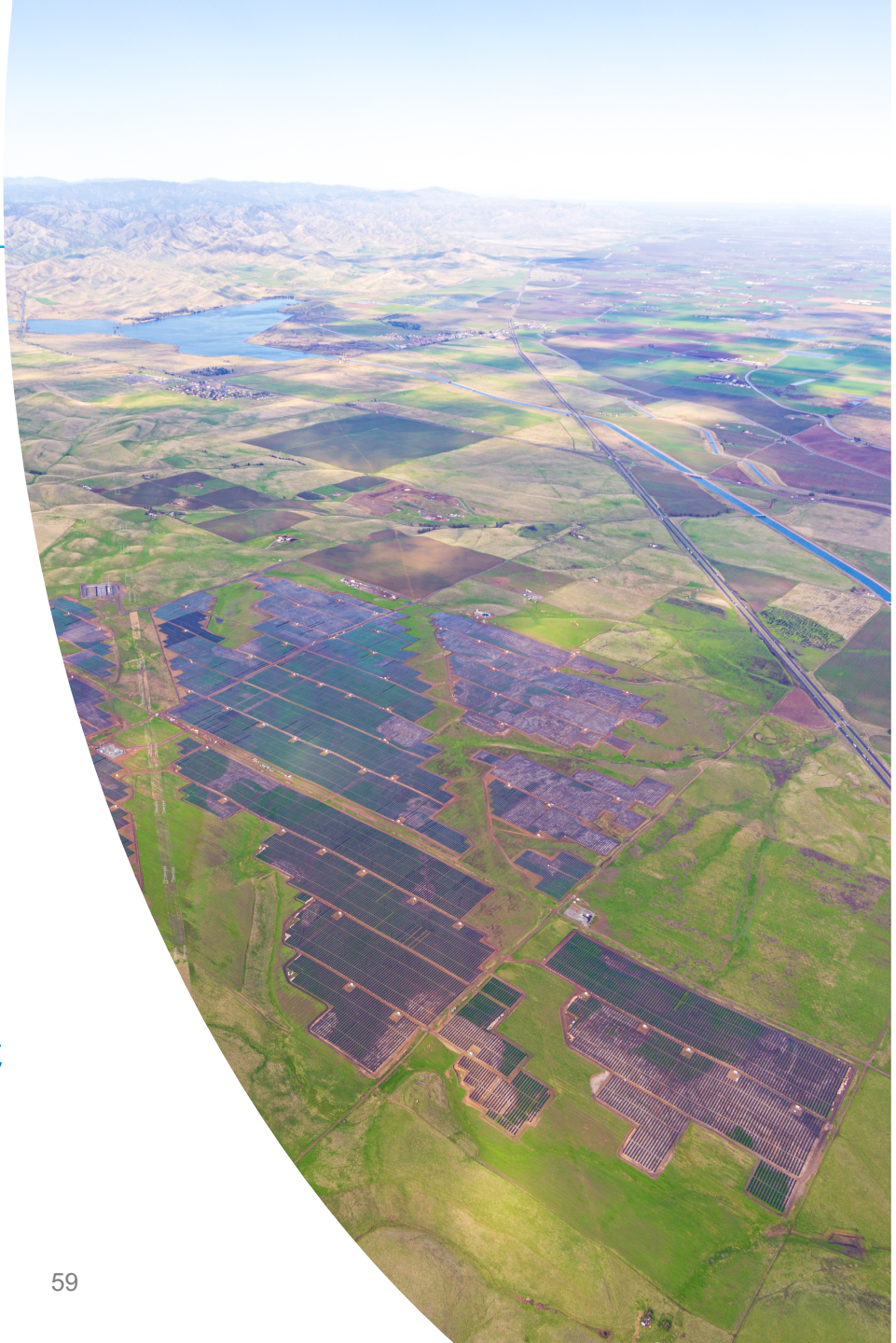
- Currently all CAISO settlements flow through a Scheduling Coordinator ID (SCID) managed by Direct Energy who passes all financial settlements to PCE
- PCE is acquiring its own SCID to settle directly with CAISO rather than through its SC
 - Multistep process that staff is currently working on
 - Target date for acquiring SCID is Feb. 1, 2021
 - Extending contract with Direct Energy through Jan. 2021 and transfer service to new SC provider on Feb. 1, 2021



Strategic Goal

- The Strategic Plan approved by the Board set PCE's Priority One to “design a power portfolio that is sourced by 100% carbon free¹ energy by 2025 that aligns supply and consumer demand on a 24x7 basis”
- To achieve this goal PCE will need to hire an experienced SC to optimize its portfolio of resources to match 24x7 load demand and shift surplus energy to hours with higher demand
- Staff issued an RFP with this goal in mind and with the intent to aggregate its load and resources under one SC

¹ Carbon Free = California RPS-eligible renewable energy, excluding biomass, that can be scheduled by Peninsula Clean Energy on an hourly basis.



Request for Proposals

- Staff issued RFP in September seeking services for a SC, CRR portfolio management, and forecasting
- Received 9 SC, 10 CRR, and 12 forecasting proposals
- Staff shortlisted and held interviews with 4 SC and CRR service providers and 3 forecast providers, based on;
 - Meeting the requirements of RFP
 - Qualifications and experience
 - PCE's goals in mind
 - Value for their service

ZGlobal Inc.

- ZGlobal selected to provide load and resource SC services, CRR portfolio management, and day-ahead load forecasting services
- Key Considerations:
 - Experienced SC for both load and resource scheduling
 - ZGlobal provides SC & CRR services for a few CCAs
 - Highly recommended – knowledge of CAISO market, reporting and analytical abilities, a reliable source of information, and providing overall good service
 - Recognize PCEs goals will become key in developing bidding strategies
 - Competitive offering, best value for the services offered



Agreement Terms

- Term: 3 years, Feb. 1, 2021 – Jan. 31, 2024
- Termination: PCE can terminate the Agreement for any reason with enough advance notice to transfer responsibilities to new SC
- Compensation: Agreement will not exceed \$850,000
- Timing of Services:
 - Zglobal will begin scheduling PCEs load Feb. 1, 2021
 - Current PPA resources will transfer from existing SC to ZGlobal in late Sept. 2021
- Options:
 - Add additional resources to the Agreement after PCE signs new PPAs
 - Renew services for one additional year, near the end of the 3-year term

Recommendation

Approve Resolution Delegating Authority to Chief Executive Officer to Execute an Agreement with ZGlobal Inc. with terms consistent with those presented, in a form approved by the General Counsel, and for a term of three years in an amount not to exceed \$850,000.

Regular Agenda

8. Approve the proposed contract amendment to include an additional \$100,000 in the existing contract with TRC Engineers to support the development of local policies to advance building electrification and electric vehicle readiness in existing buildings (Action)

Technical Support for an Existing Building Electrification Policy

Board of Directors, December 17, 2020

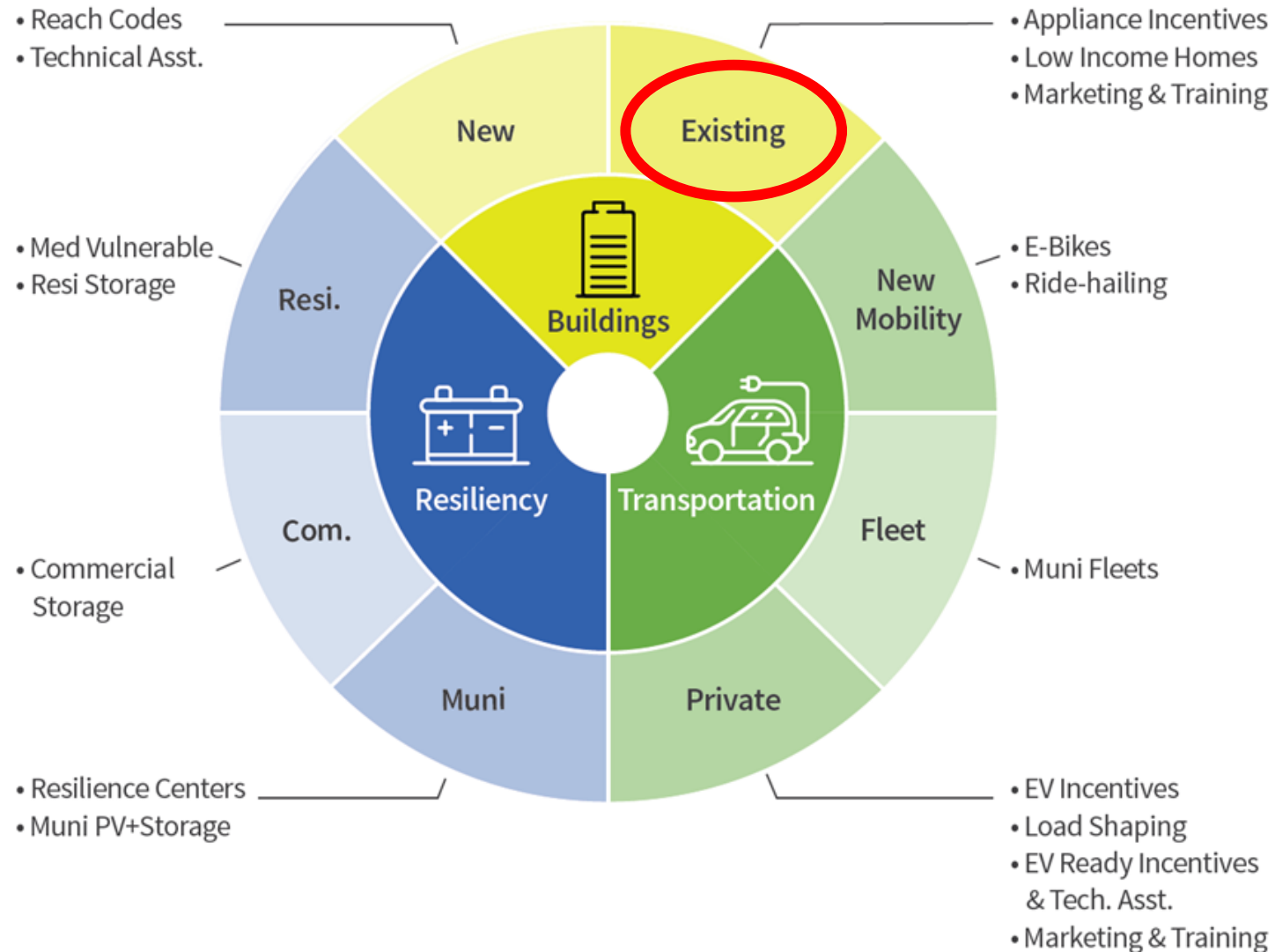
Amend Reach Code Contract: Request

Program: Reach Code Assistance Program Extension

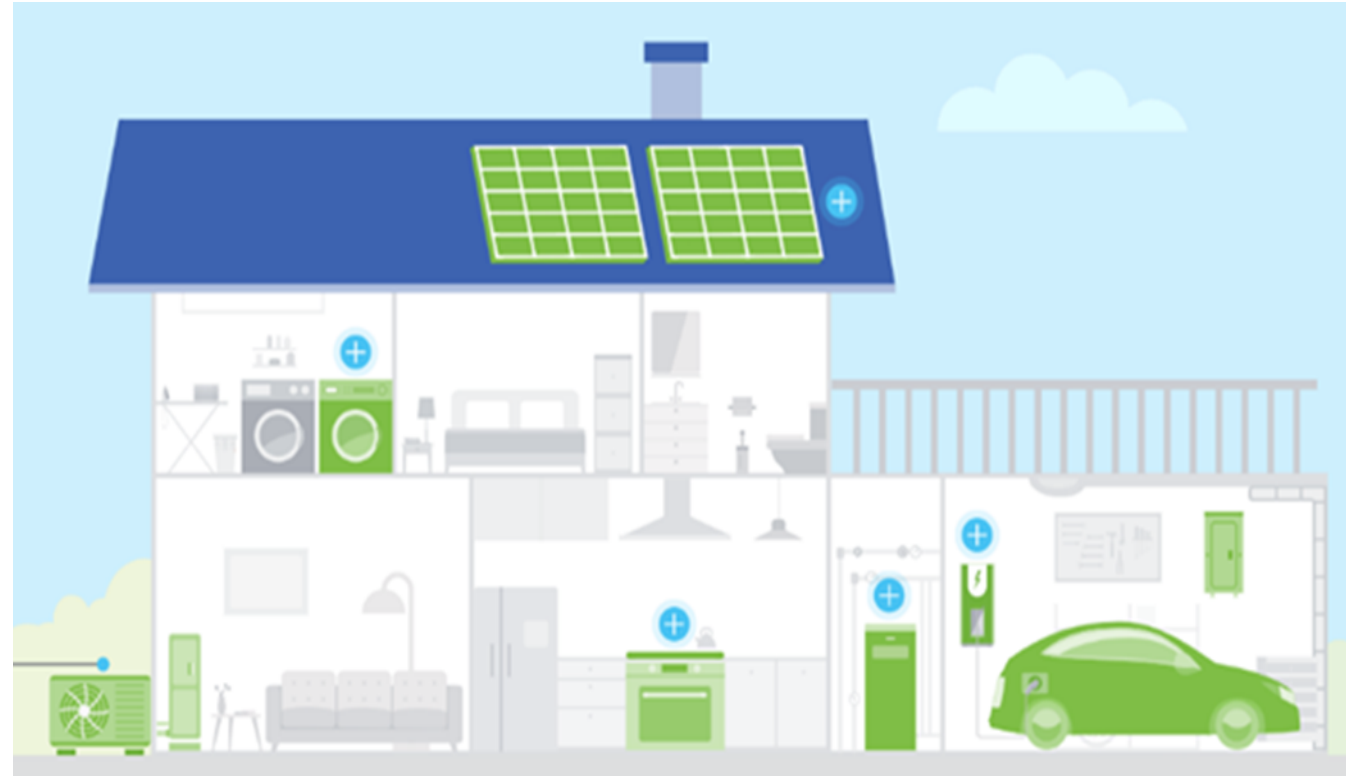
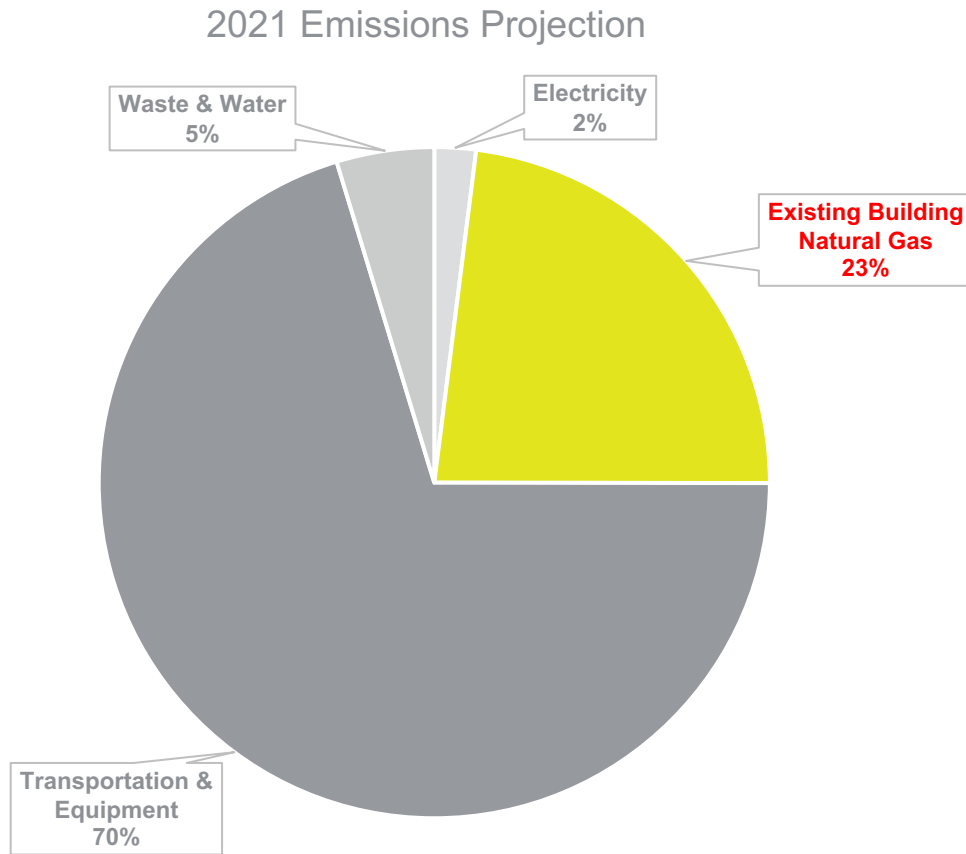
Request: Approve proposed contract amendment of TRC Engineers Inc., to include support for the development of local policies to advance building electrification and EV readiness in existing buildings

Amount & Term: Up to \$100,000 over 1 year

Programs Portfolio



SMC Emissions by Sector



Current Existing Building Programs

- Heat Pump Water Heater Program
 - \$2.8M for 4 years
 - 1,500 units converted with \$1,000 rebate/unit
 - Launching Jan 01, 2021
- Income-Qualified Home Upgrade Program
 - 200-250 home upgrades with some electrification measures
 - Anticipated launch Q2, 2021

2045 Replacement Example: Single Family Water Heaters

Water Heaters in Single Family

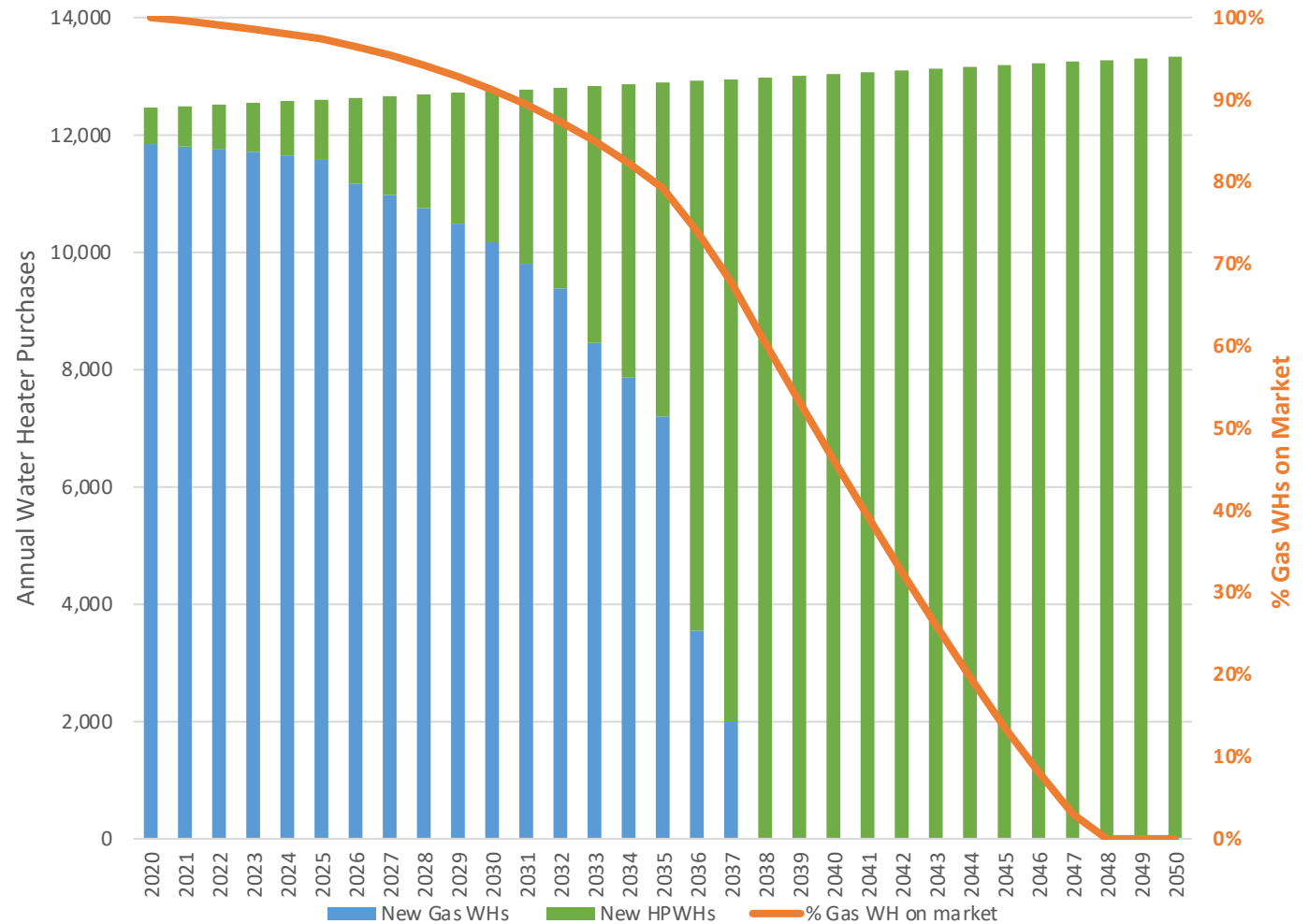
- Approximately 160,000
- Conversion to electric by 2045

Yearly conversion increase required

- 2021 – 2025 = 10%
- 2026 – 2035 = 15%
- 2036 onwards = 18%

Gas Water Heaters less expensive

Policy support required



Menlo Park Climate Action Plan

- Adopted Climate Action Plan for 2030 decarbonization
- Includes:
 - Existing building decarbonization code
 - Existing building EV infrastructure code
- Code Development
 - Technical and legal assessment, stakeholder engagement
 - Target adoption Q4 2021

Menlo Park Existing Building Policy Support

- Adopted Climate Action Plan for 2030 decarbonization, including
 - Existing building decarbonization code
 - Existing building EV infrastructure code
 - Target adoption Q4 2021
- Needs: Technical assessment, stakeholder engagement
- Support requested
- Opportunity to develop model and resources for other cities
- Timing coincides with 2022 code cycle

Proposed Contract Scope

- Research existing codes, policies and financial incentives
- Conduct cost effectiveness analysis
- Develop design guidelines for single family home electrification
- Provide recommendations and participate in stakeholder engagements
- Identify transferable tools and models for SMC cities for consideration and adoption

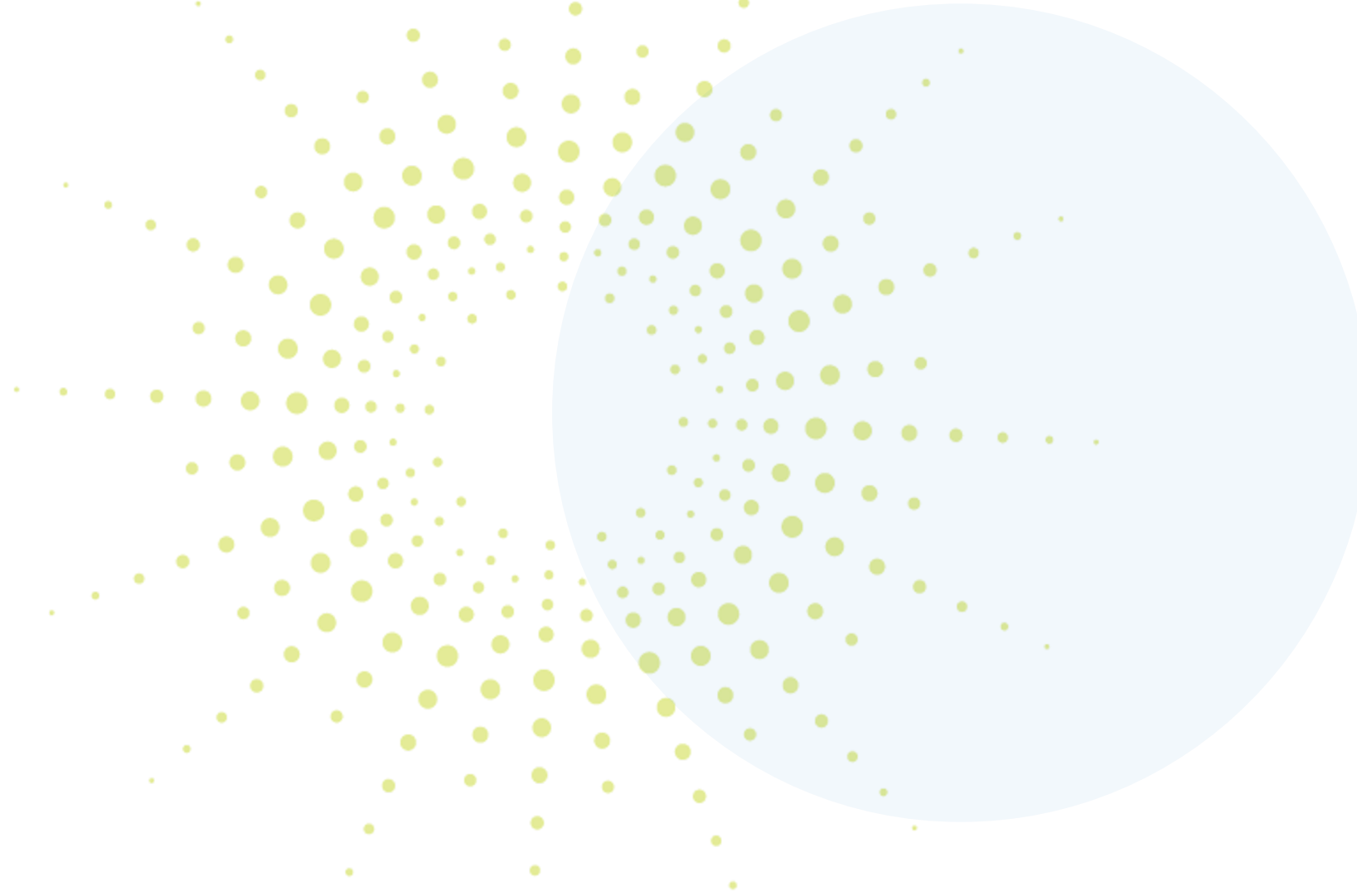
Amend Existing Reach Code Contract: Request

Program: Reach Code Technical Assistance

Request: Approve proposed contract amendment of TRC Engineers Inc., to include support for the development of local policies to advance building electrification and EV readiness in existing buildings

Amount & Term: Up to \$100,000 over 1 year

Backup Slides



Backup: Summary of Existing Reach Code Effort

1. Consultant

- TRC Engineers Inc.

2. Support

- Building and EV model codes for New Construction,
- Technical assistance, tools and resources
- \$10,000 for municipalities considering reach codes,
- Technical assistance & trainings for developers and contractors
- Nine SMC jurisdictions adopted reach codes till date

3. Contract

Timeline: Jan 2019 – Jun 2022

Amount: \$750,000 (\$400,000 is funded by PCE and \$350,000 by SVCE)

Regular Agenda

9. Adopt a Resolution endorsing the efforts of the Beyond Gasoline Initiative to reduce gasoline consumption by 50% by 2030 in San Mateo County (Action)



Resolution Endorsing Beyond Gasoline Initiative

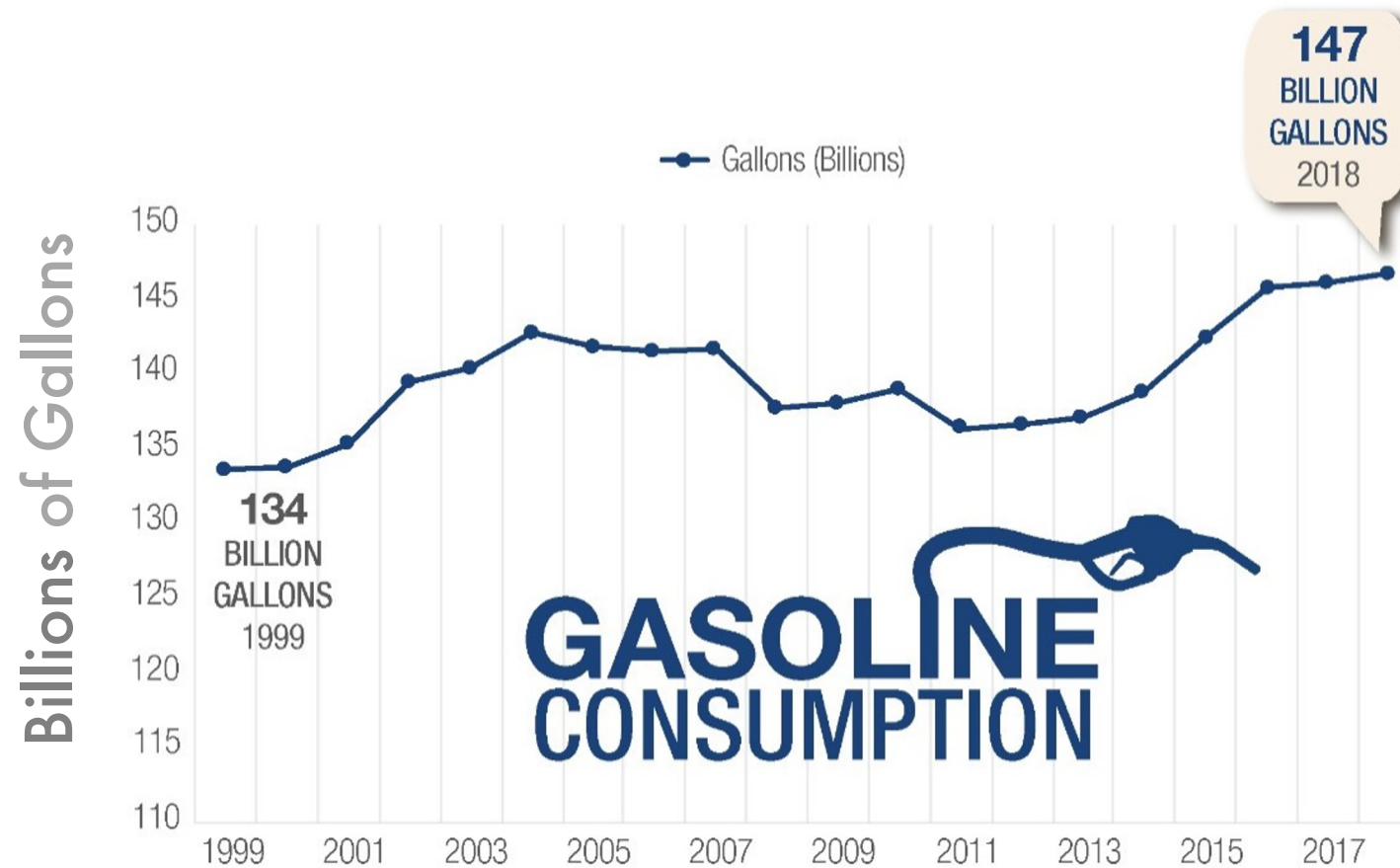
Janelle London

Citizens Advisory Committee Recommendation

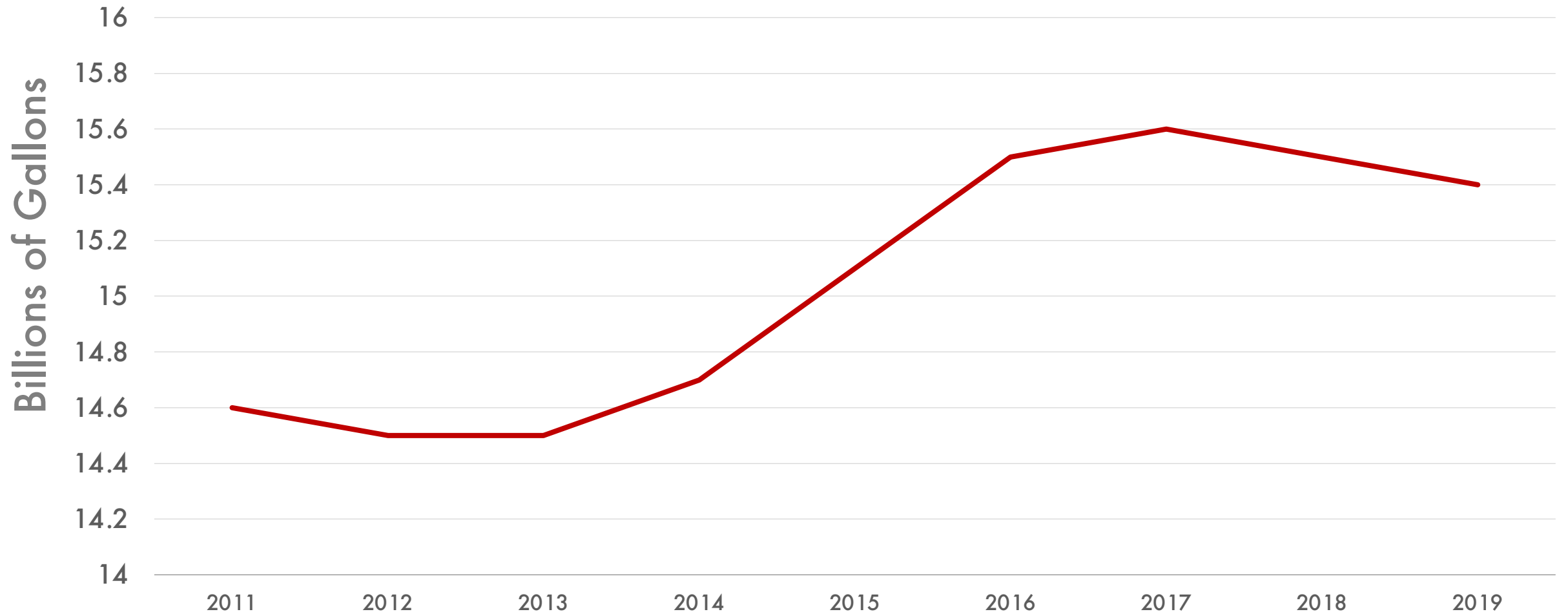
Background

- Joint Venture Silicon Valley “Beyond Gasoline” initiative
- Goal of reducing gasoline consumption in Silicon Valley 50% by 2030
 - Partnering with local governments and businesses on measures and commitments to reduce gasoline consumption and
 - Educating the broader community on why and how to reduce gasoline consumption
- Discussed by Citizens Advisory Committee in November meeting
- Unanimous vote to send recommendation to board

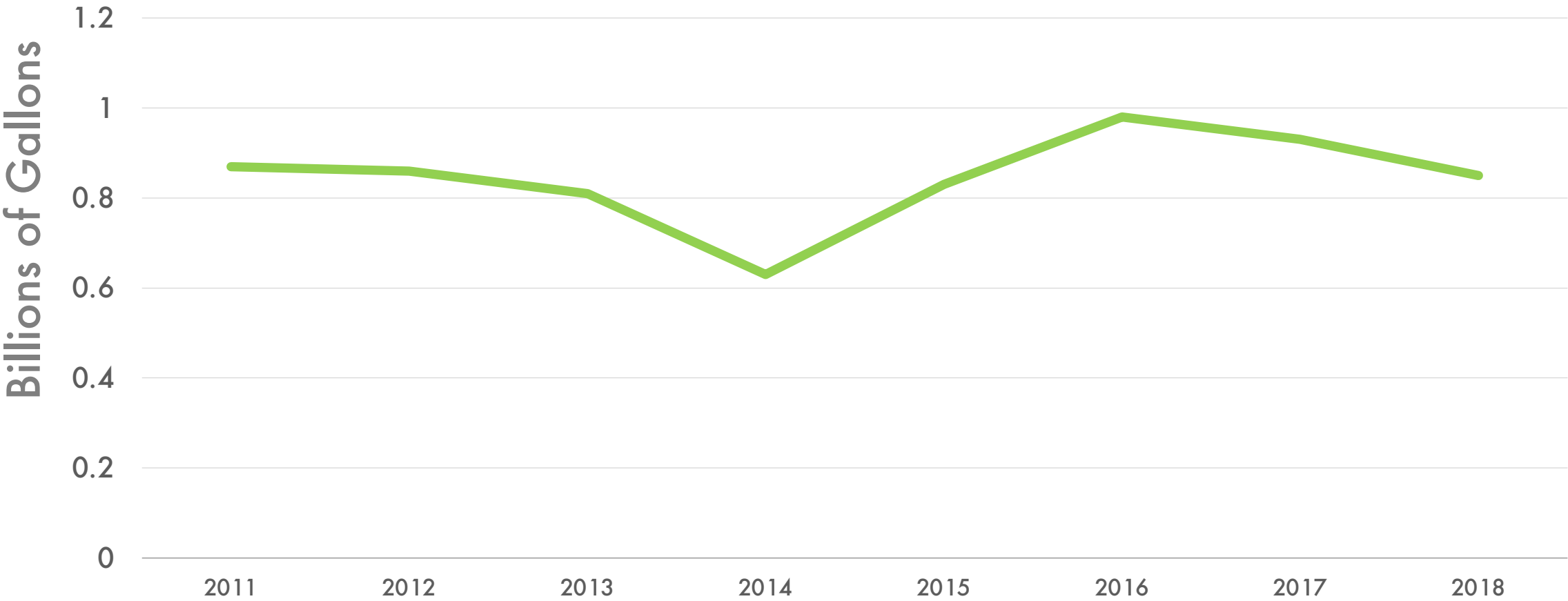
GASOLINE SALES: USA



GASOLINE SALES: CALIFORNIA



GASOLINE SALES: SV



GASOLINE SALES

| CITY | 2016 | | 2017 | | 2018 | |
|---------------------|------------------|--------------|------------------|--------------|------------------|--------------|
| | Gasoline Gallons | Gas Stations | Gasoline Gallons | Gas Stations | Gasoline Gallons | Gas Stations |
| | Sold | Reported | Sold | Reported | Sold | Reported |
| SOUTH SAN FRANCISCO | 57,385,974 | 22 | 59,581,687 | 21 | 58,659,349 | 21 |
| SAN MATEO | 43,317,026 | 21 | 43,836,779 | 22 | 37,323,218 | 19 |
| REDWOOD CITY | 41,529,382 | 25 | 41,818,529 | 24 | 42,075,916 | 24 |
| MOUNTAIN VIEW | 65,453,630 | 18 | 27,148,459 | 18 | 34,400,371 | 14 |
| DALY CITY | 36,871,648 | 17 | 38,121,730 | 18 | 27,071,554 | 15 |
| MILPITAS | 27,884,373 | 14 | 27,738,778 | 15 | 18,918,397 | 12 |
| NOVATO | 25,105,195 | 11 | 25,697,601 | 11 | 14,904,021 | 6 |
| MENLO PARK | 17,049,012 | 11 | 16,690,181 | 11 | 13,218,053 | 9 |
| SAN BRUNO | 20,110,433 | 12 | 24,117,591 | 12 | 18,692,943 | 11 |
| UNION CITY | 11,541,934 | 8 | 13,313,751 | 9 | 11,899,931 | 8 |
| MILLBRAE | 10,933,168 | 7 | 11,661,931 | 7 | 13,837,226 | 7 |
| BURLINGAME | 9,603,934 | 9 | 8,012,057 | 8 | 7,253,776 | 8 |
| BELMONT | 7,294,873 | 7 | 4,687,779 | 5 | 7,257,005 | 6 |
| SAN CARLOS | 7,105,977 | 6 | 7,318,689 | 6 | 4,917,749 | 5 |

CAVEAT: 10% - 30% underreported

Citizens Advisory Committee Recommendation

1. Board endorse the efforts of the Beyond Gasoline Initiative to reduce gasoline consumption in Mateo County by 50% by 2030
2. Board direct Peninsula Clean Energy staff to receive a report annually by Joint Venture Silicon Valley regarding gasoline consumption in San Mateo County

Regular Agenda

10. Board Members' Reports (Discussion)

Regular Agenda

Adjourn