

# Peninsula Clean Energy ECO100 and 100% Renewables

December 7, 2023



# Overview

---

- Background on ECO100
- Discussion on green premiums
- Survey of other CCA offerings

# ECO100 Background

---

## ECOplus

ECOplus is our default electric option, in which you are automatically enrolled.

- Lower rates than what you currently pay PG&E
- 50% renewable and 100% clean energy

## ECO100

ECO100 is for those who want to help make the greatest impact in reducing greenhouse gas emissions. 100% renewable and carbon-free Costs \$0.01 per kWh more than our ECOplus option

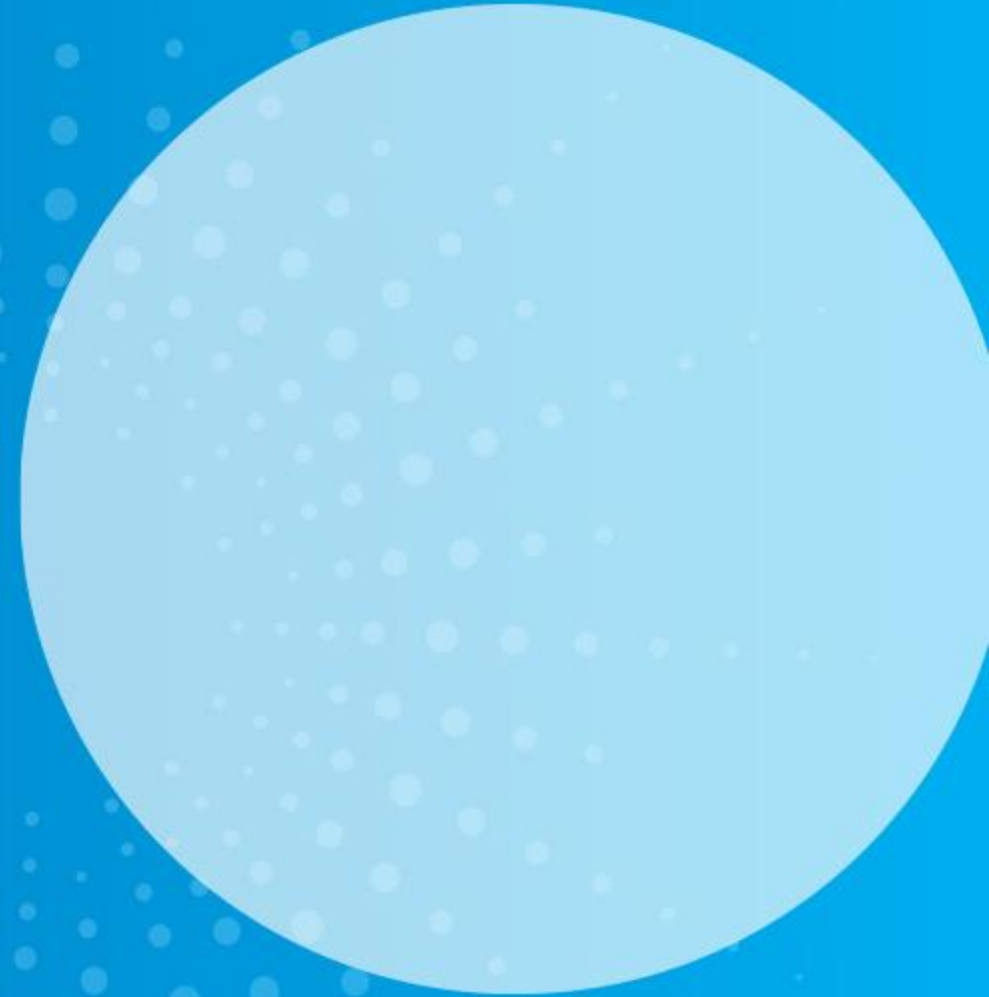
ECO100 is Green-e Energy certified, and meets the environmental and consumer-protection standards set forth by the nonprofit Center for Resource Solutions.



Learn more at [green-e.org](https://www.green-e.org).

- Approx \$5/month
- 6,500 enrolled (63% residential, 37% non-residential)
- 2% of PCE accounts

# Deep Green Rates



# For discussion

---

The ECO100 “green premium“ covered the delta between the cost of conventional power and renewable energy.

What might the next “green premium” to tackle?

What might customers be willing and excited to pay for?

# MCE Clean Energy's Local Sol

Customers are paying a fixed rate (\$0.142/kWh) to support local solar project.

Electricity is produced at the Cooley Quarry Solar Project as part of MCE Energy's Feed-In Tariff Program.

MCE Local Sol <b>100%</b> <b>RENEWABLE**</b> <i>Local Solar</i>	MCE Deep Green <b>100%</b> <b>RENEWABLE**</b> <i>Solar and Wind</i>
<b>\$66.53</b> MCE Electric Generation	<b>\$72.77</b> MCE Electric Generation

### KEY BENEFITS

- Fixed price for solar generation over 20-years
- Enables customers to ensure their ratepayer funds develop local resources

# SVCE's Home Electric Rate

---

## An Intentional Electricity Rate

Customers that shift electricity use to off-peak hours could see up to a 20% discount on their electric generation charges.

## How it works

- Lower rate during off-peak times (12 a.m. – 3 p.m.)
- Higher rate during on-peak times (4 p.m. – 9 p.m.).

Savvy customers on this rate will benefit when they pay close attention to when they use their electricity.

Shifting load manually or via smart technology

## KEY BENEFITS

- Save big on your energy bill
- Take advantage of your electric technology
- Support the state-wide clean energy transition

# New concept: 24/7 Zero-Carbon Rate

---

**Customers can opt-in to pay a nominal rate premium to receive zero-carbon, renewable energy 24 hours a day, 7 days a week.**

This is above and beyond the 100% renewable energy that all Peninsula Clean Energy customers will soon be receiving on an annualized basis—meaning customers who opt-in are pioneers in helping Peninsula Clean Energy reach its goal of matching customer load with renewable energy 24/7. Participation would be limited and available on a first come, first serve basis.

## KEY BENEFITS

- Doing your part helping shape an emissions-free, clean-energy future for the community.
- Being a pioneer in PCE's industry leading 24/7 renewable energy goal.
- Benefiting from a 0 emissions product, as opposed to the default low emissions 100% renewable energy product.



Thank you!