



# EV Ready Technical Assistance Case Study



## Peninsula Clean Energy's technical assistance helps customers install more EV chargers and reduce cost

Peninsula Clean Energy's [EV Ready Program](#) offers free, optional, technical assistance and project support for customers who plan to install EV charging equipment. This includes multi-unit dwellings, workplaces, and public agencies. By using a "right-sizing" approach, we're helping customers install more chargers than they originally requested, while avoiding service upgrades, and at lower costs.

### Approach

Our program tailors each EV charging project to the needs of the property. In scenarios where vehicles park for extended periods, like overnight stays at apartments and condos, our [research](#) shows about 94% of drivers across the state require approximately 1.6 kW of charging capacity to recharge overnight, providing around 70 miles of range.

To maximize access to charging at these locations, while minimizing the need for major electrical upgrades, our technical assistance team typically recommends Level 1 or power-managed Level 2 charging solutions for these types of long-dwell parking scenarios. These solutions offer sufficient capacity and are more cost-effective than higher power alternatives. The result: a greater number of chargers can be installed within the project budget and the property's electrical capacity.

We help optimize design in other ways that reduce costs as well, including using conduit where possible instead of trenching, planned routing that minimizes labor and material, and working within the existing electrical capacity to avoid service upgrades.

### Outcomes

#### More EV chargers installed

Customers with all property types in our program have been able to increase their EV charging projects from what they initially requested. On average, customers decided to install 50% more EV chargers. For owners of apartments and condos, the impact was greater, enabling them to increase their EV charging project scopes by 70% on average.

#### Significantly lower project costs

Overall, EV Ready projects cost about \$4,000 per installed EV charger. This is significantly lower than other programs in California, which typically range in cost from \$10,000 to \$18,000 per installed charger.



Figure 1. Ten chargers (Level 2) installed at above property for <\$3,000 per charger

With our EV program and technical assistance, Level 1 charging projects are averaging \$2,400 per outlet, fully installed, offering a highly cost-efficient charging solution for most drivers.

## Technical Assistance Services

The following services are provided at no cost:

1. Education on EV charging, power management, and make-ready options
2. Virtual or in-person site walk
3. Electrical capacity load study
4. Three, project design options: initial request, most cost-effective, and most future-proof with maximum EV charging
5. ADA considerations
6. Recommended charging fees
7. Contractor referrals
8. Negotiated pricing for EV charging equipment

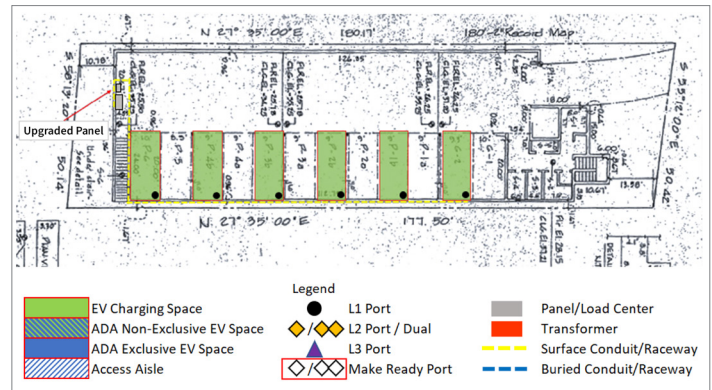


Figure 2. Typical site plan created by technical assistance team after site survey

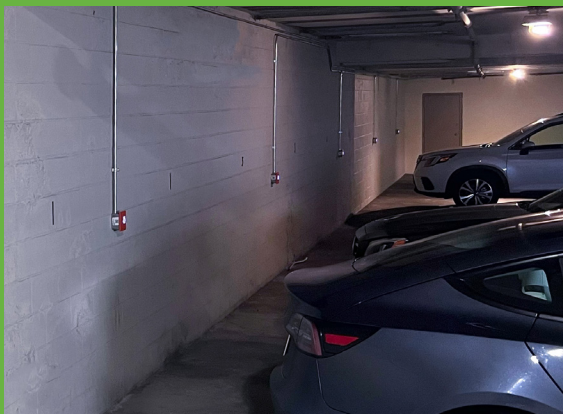


Figure 3. Level 1 chargers installed at Tyrone Properties

## Technical assistance in practice

Tyrone Properties, a small, multi-family property manager, enrolled in Peninsula Clean Energy's EV Ready program to add charging at several of their properties in San Mateo County. They took advantage of the program's project planning, site designs, charging recommendations, and ROI calculations.

As a result, 23 Level 1 chargers were installed across two properties with no out-of-pocket cost.

## The EV Ready Program

The EV Ready Program is a \$28-million electric vehicle (EV) charging infrastructure program seeking to install 3,500 charging ports in San Mateo County and Los Banos over four years. For more information about our EV Ready program, visit <https://www.PenCleanEnergy.com/ev-ready>

CLEAResult assists Peninsula Clean Energy in implementation of EV Ready's technical assistance program. For more resources and case studies on EV charging, please visit Peninsula Clean Energy's [Technical Resources](#) page.

## About Peninsula Clean Energy

Peninsula Clean Energy is a community-controlled, not-for-profit, joint powers agency formed as a Community Choice Aggregation (CCA) program by San Mateo County and all 20 of its cities and towns in 2016, and joined by the City of Los Banos in 2020. As a CCA, Peninsula Clean Energy offers many environmental and economic benefits to its residential and business customers. For more information visit [PenCleanEnergy.com](https://www.PenCleanEnergy.com).